

Light efficiency:

103 Lumen/Watt

Color temperature:

3101 K

Light quality:

CRI:93.5, R_g:91.4, R_f:98.3

P: 2 / V: - / F: 2

Output: 1143 lm

Peak: 2212 cd

Power: 11.1 W

Voltage: 120 V

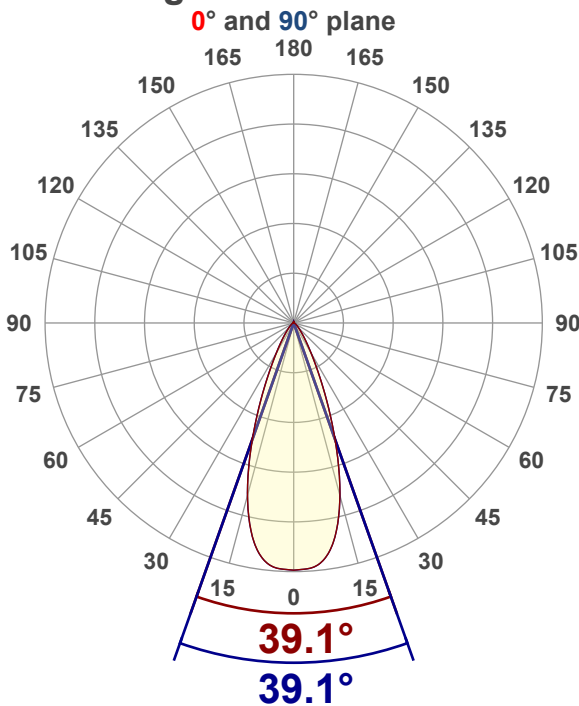
Current: 0.096 A

PF: 0.97

THD: 16.13 %



Angular Distribution



Product name:

RA4-12G-30K-90WH

Test Date:

11/17/2025

Beam Angle (50% of the brightness of the centre):
39.1°

Field Angle (10% of the brightness of the centre):
65.6°

Cut Off Angle (2.5% of the brightness of the centre):
92.3°

Beam Details

*measured at centre of beam

Mounting Height (feet)\(meter)	Lux*	Footcandles*	Beam width (feet) / (meter)
4 ft / 1.2 m	1488 lx	138 fc	2.8 ft / 0.9 m
8 ft / 2.4 m	372 lx	35 fc	5.7 ft / 1.7 m
12 ft / 3.7 m	165 lx	15 fc	8.5 ft / 2.6 m
16 ft / 4.9m	93 lx	9 fc	11.4 ft / 3.5 m
20 ft / 6.1m	60 lx	6 fc	14.2 ft / 4.3 m

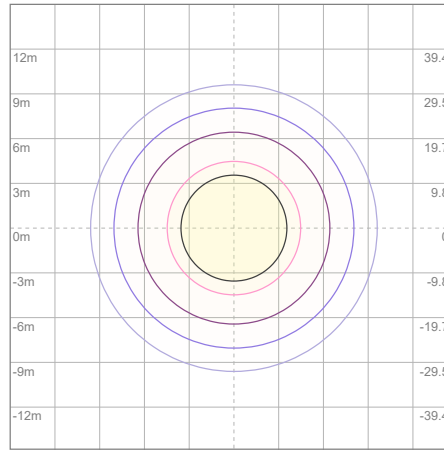
Beam center

Photometric Testing Report

Zonal Lumen Summary

Zone	Lumen	%Luminaire
0-30	913	79.88%
0-40	1024	89.59%
0-60	1099	96.15%
60-90	26.3	2.30%
70-100	13.3	1.16%
90-120	5.07	0.44%
0-90	1126	98.51%
90-180	17.6	1.54%
0-180	1143	100.00%

ISO Lux Diagram



Lux at center:	238 lx
3%	7.14 lx
5%	11.90 lx
10%	23.80 lx
30%	71.40 lx
50%	119.00 lx

Conditions:
 Number of planes: 8
 Lux distribution on a surface when lamp is mounted at 3.05 meters from the surface.

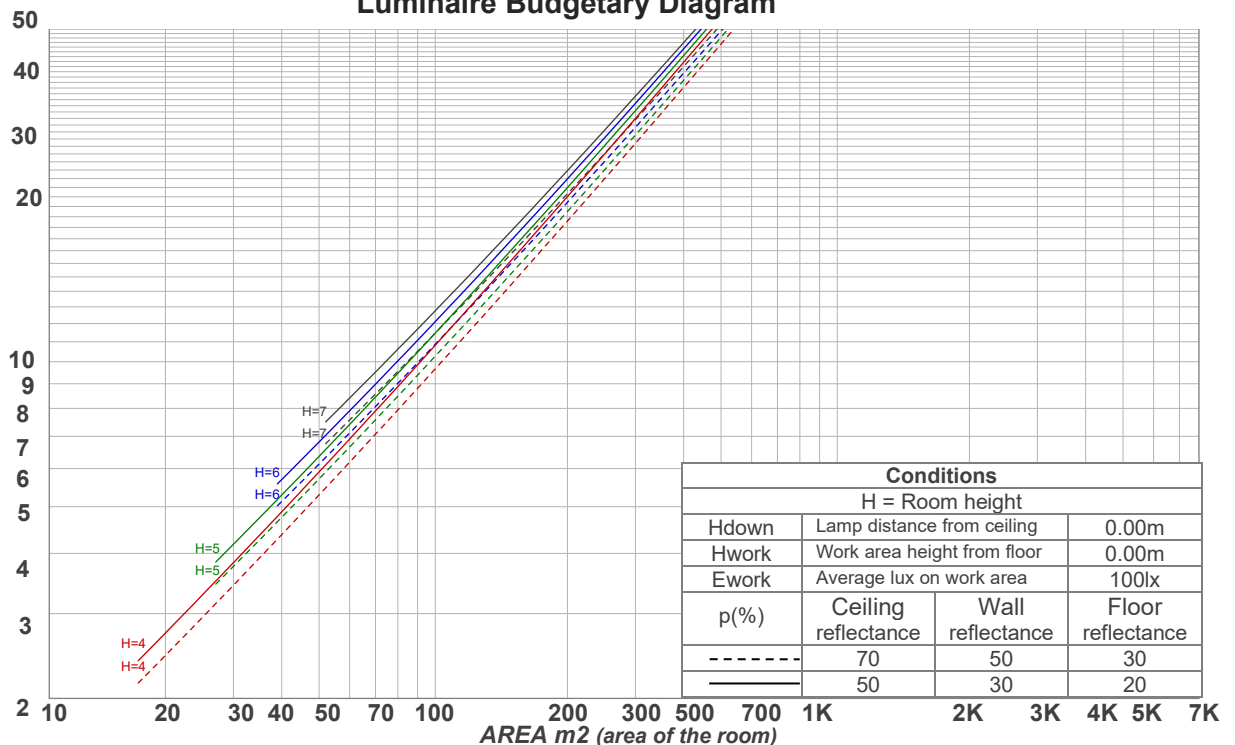
Mounting height: 3.05 meters (10 feet)

Coefficients of Utilization

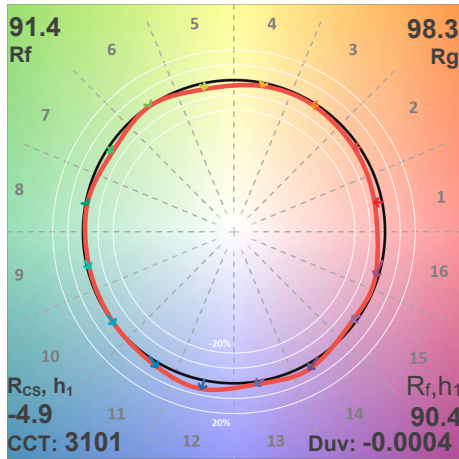
Ceiling reflectance	80				70				50			30			10			0
	70	50	30	10	70	50	30	10	50	30	10	50	30	10	50	30	10	0
Wall reflectance	70	50	30	10	70	50	30	10	50	30	10	50	30	10	50	30	10	0
Floor reflectance	20	20	20	20	20	20	20	20	20	20	20	20	20	20	20	20	20	0
RCR	(RCR: Room Cavity Ratio)																	
	Room Values are expressed as percentage of Lumens delivered to the task surface																	
0	119	119	119	119	116	116	116	116	110	110	110	105	105	105	101	101	101	98
1	113	111	108	106	111	108	106	104	104	102	101	100	99	97	96	95	94	92
2	108	103	100	96	106	102	98	95	98	95	93	95	93	91	92	90	89	87
3	103	97	92	89	101	96	91	88	93	89	86	90	87	85	88	85	83	82
4	99	92	86	83	97	90	86	82	88	84	81	86	83	80	84	81	79	77
5	94	87	81	77	93	86	81	77	84	79	76	82	78	75	80	77	75	73
6	90	82	77	73	89	81	76	73	80	75	72	78	74	71	77	73	71	69
7	87	78	73	69	85	78	72	69	76	72	68	75	71	68	74	70	67	66
8	83	75	69	66	82	74	69	65	73	68	65	72	68	65	71	67	64	63
9	80	71	66	62	79	71	66	62	70	65	62	69	65	62	68	64	61	60
10	77	68	63	60	76	68	63	60	67	62	59	66	62	59	65	62	59	58

LAMPS (number of lamps)

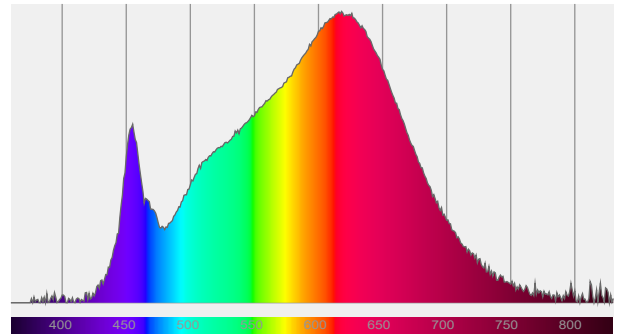
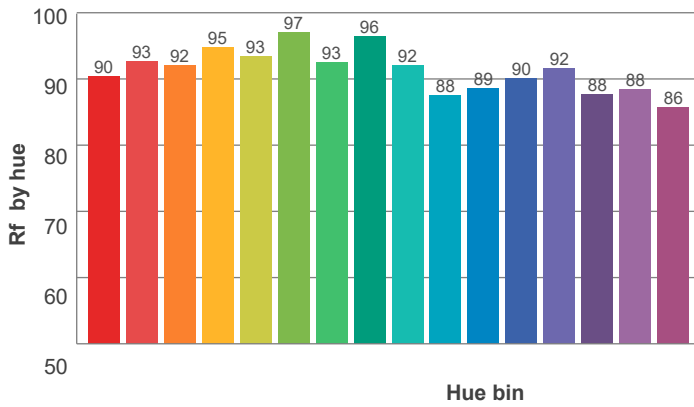
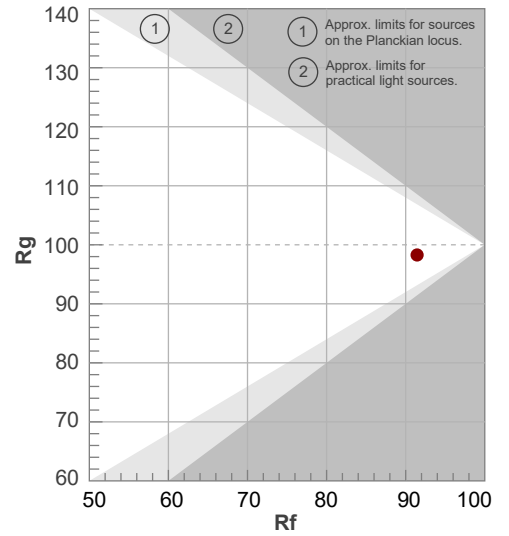
Luminaire Budgetary Diagram



ANSI/IES TM-30-18 P: 2 / V: - / F: 2

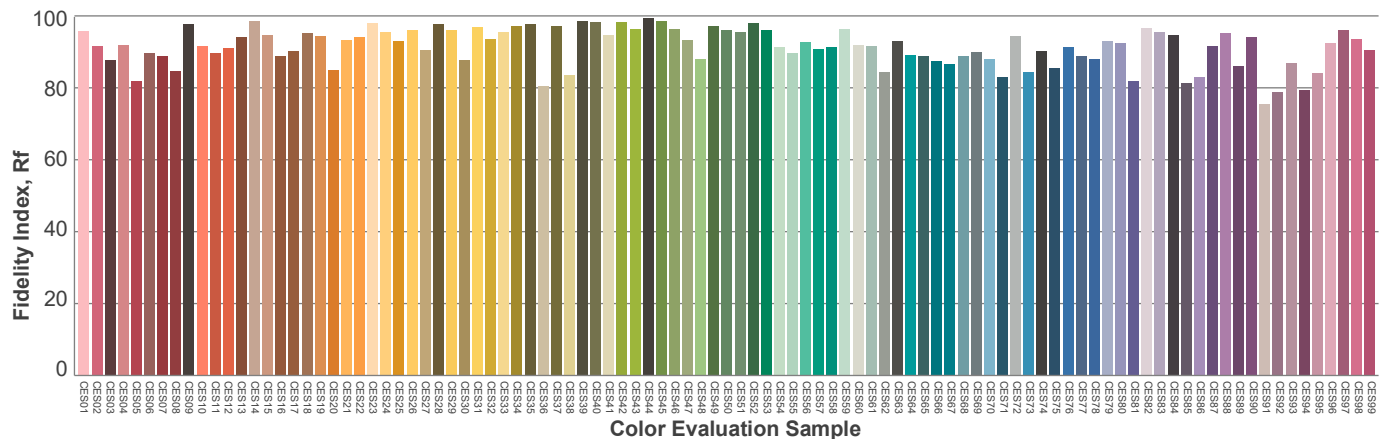
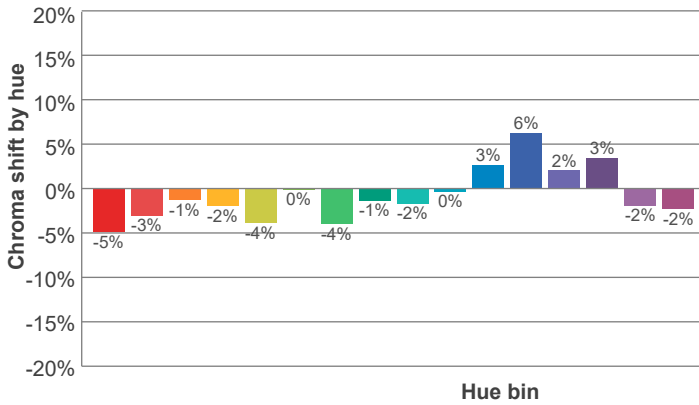


Hue Bin	R _f	Shifts (%)	
		Chroma	Hue
1	90	-5%	1%
2	93	-3%	2%
3	92	-1%	4%
4	95	-2%	0%
5	93	-4%	1%
6	97	0%	0%
7	93	-4%	1%
8	96	-1%	2%
9	92	-2%	5%
10	88	0%	7%
11	89	3%	8%
12	90	6%	-1%
13	92	2%	-6%
14	88	3%	-9%
15	88	-2%	-6%
16	86	-2%	-11%



SPD

Red: 36%, Power=10.5mW
 Blue: 9.9%, Power=7.3mW
 Green: 25%, Power=13.6mW
 UVA: 0.2%, Power=0.0mW
 Dominant Wavelength: 583nm
 1st Peak Wavelength: 618nm
 2nd Peak Wavelength: 455nm



Glare Evaluation According to UGR

p Ceiling		70	70	50	50	30	70	70	50	50	30
p Walls		50	30	50	30	30	50	30	50	30	30
p Floor		20	20	20	20	20	20	20	20	20	20
Room size X Y		Viewing direction at right angles to lamp axis					Viewing direction parallel to lamp axis				
2H	2H	19.6	20.1	19.7	20.4	20.6	19.6	20.1	19.7	20.4	20.6
	3H	19.8	20.5	20.2	20.7	20.9	19.8	20.5	20.2	20.7	20.9
	4H	20.0	20.7	20.4	20.9	21.2	20.0	20.7	20.4	20.9	21.2
	6H	20.2	20.8	20.6	21.1	21.5	20.2	20.8	20.6	21.1	21.5
	8H	20.3	20.8	20.6	21.2	21.6	20.3	20.8	20.6	21.2	21.6
	12H	20.3	20.9	20.7	21.2	21.7	20.3	20.9	20.7	21.2	21.7
4H	2H	19.5	20.2	19.9	20.5	20.7	19.5	20.2	19.9	20.5	20.7
	3H	20.1	20.6	20.5	21.0	21.4	20.1	20.6	20.5	21.0	21.4
	4H	20.3	20.8	20.8	21.3	21.8	20.3	20.8	20.8	21.3	21.8
	6H	20.6	21.2	21.1	21.5	21.9	20.6	21.2	21.1	21.5	21.9
	8H	20.7	21.2	21.3	21.6	22.0	20.7	21.2	21.3	21.6	22.0
	12H	20.8	21.2	21.3	21.6	22.1	20.8	21.2	21.3	21.6	22.1
8H	4H	20.4	20.9	20.9	21.2	21.6	20.4	20.9	20.9	21.2	21.6
	6H	20.8	21.1	21.3	21.6	22.2	20.8	21.1	21.3	21.6	22.2
	8H	21.1	21.3	21.6	21.9	22.5	21.1	21.3	21.6	21.9	22.5
	12H	21.2	21.4	21.8	22.0	22.6	21.2	21.4	21.8	22.0	22.6
12H	4H	20.4	20.7	20.9	21.2	21.7	20.4	20.7	20.9	21.2	21.7
	6H	20.9	21.1	21.4	21.7	22.3	20.9	21.1	21.4	21.7	22.3
	8H	21.1	21.3	21.7	21.8	22.5	21.1	21.3	21.7	21.8	22.5
Variation of the observer position for the luminaire distance S											
S = 1.0H		1.7 / -1.0					1.7 / -1.0				
S = 1.5H		3.4 / -1.4					3.4 / -1.4				
S = 2.0H		5.0 / -1.9					5.0 / -1.9				
Standard table		n/a					n/a				
Correction summand		n/a					n/a				
Corrected glare indices referring to 1143 lm total luminous flux											

Due to our continued efforts to improve our products, product specifications are subject to change without notice. Please refer to our website for the latest test results.