

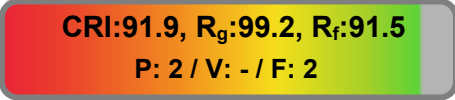
Light efficiency:



Color temperature:



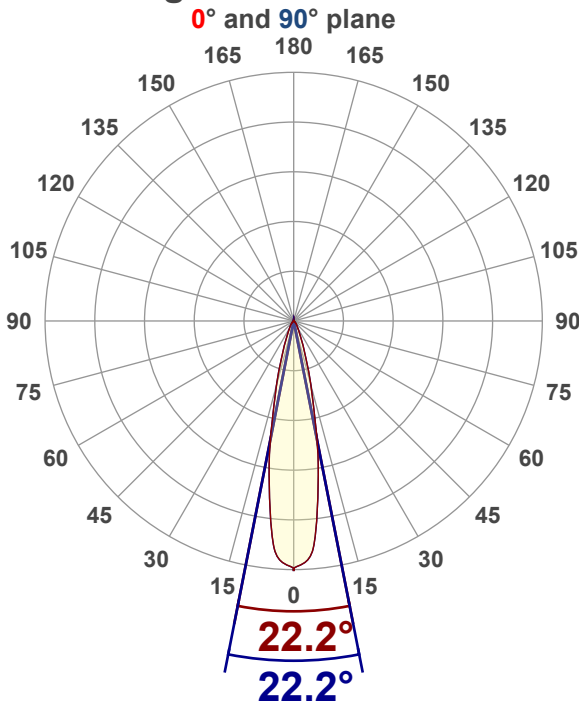
Light quality:



**Output: 608 lm**  
**Peak: 2804 cd**  
**Power: 7.0 W**  
**Voltage: 24.0 V**  
**Current: 0.290 A**  
**PF: 1.0**  
**THD: 0 %**



Angular Distribution



Product name:

**P-AT-SPOT8-35-XX**

Test Date:

**3/26/2026**

Beam Angle (50% of the brightness of the centre):  
**22.2°**

Field Angle (10% of the brightness of the centre):  
**43.1°**

Cut Off Angle (2.5% of the brightness of the centre):  
**67°**

Beam Details

\*measured at centre of beam

Mounting Height (feet)\(meter)	Lux*	Footcandles*	Beam width (feet) / (meter)
4 ft / 1.2 m	1886 lx	175 fc	1.6 ft / 0.5 m
8 ft / 2.4 m	472 lx	44 fc	3.1 ft / 1 m
12 ft / 3.7 m	210 lx	19 fc	4.7 ft / 1.4 m
16 ft / 4.9m	118 lx	11 fc	6.3 ft / 1.9 m
20 ft / 6.1m	75 lx	7 fc	7.9 ft / 2.4 m

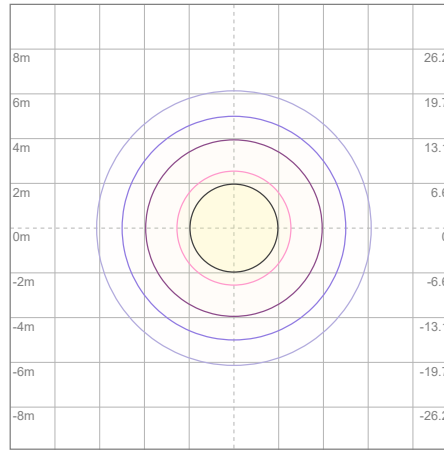
Beam center

# Photometric Testing Report

## Zonal Lumen Summary

Zone	Lumen	%Luminaire
0-30	507	83.39%
0-40	547	89.97%
0-60	590	97.04%
60-90	18.4	3.03%
70-100	7.83	1.29%
90-120	0.063	0.01%
0-90	608	100.00%
90-180	0.379	0.06%
0-180	608	100.00%

## ISO Lux Diagram



Lux at center:		301 lx
3%	9.03 lx	
5%	15.05 lx	
10%	30.10 lx	
30%	90.30 lx	
50%	150.50 lx	

**Conditions:**  
 Number of planes: 8  
 Lux distribution on a surface when lamp is mounted at 3.05 meters from the surface.

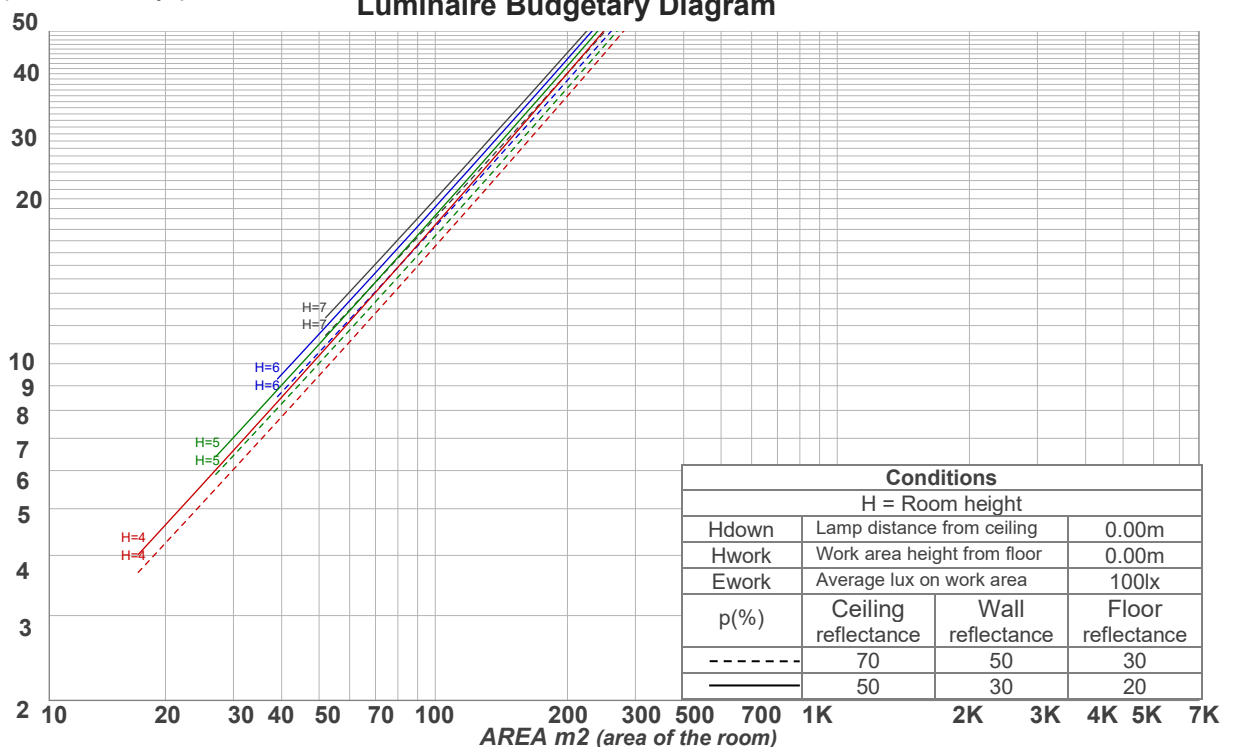
Mounting height: 3.05 meters (10 feet)

## Coefficients of Utilization

Ceiling reflectance	80				70				50			30			10			0
	70	50	30	10	70	50	30	10	50	30	10	50	30	10	50	30	10	0
Wall reflectance	70	50	30	10	70	50	30	10	50	30	10	50	30	10	50	30	10	0
Floor reflectance	20	20	20	20	20	20	20	20	20	20	20	20	20	20	20	20	20	0
<b>RCR</b>	<b>(RCR: Room Cavity Ratio)</b>																	
	Room Values are expressed as percentage of Lumens delivered to the task surface																	
0	119	119	119	119	116	116	116	116	111	111	111	106	106	106	102	102	102	100
1	114	112	109	107	112	109	107	106	105	104	102	102	101	99	98	97	97	95
2	109	105	102	99	107	104	100	98	100	98	96	97	95	93	95	93	92	90
3	105	100	95	92	103	98	95	91	96	93	90	93	91	89	91	89	87	86
4	101	95	90	87	100	94	90	86	92	88	85	90	87	84	88	86	83	82
5	98	91	86	83	96	90	86	82	88	84	81	87	83	81	85	82	80	79
6	94	87	82	79	93	86	82	79	85	81	78	84	80	78	83	80	77	76
7	91	84	79	76	90	83	79	76	82	78	75	81	78	75	80	77	74	73
8	89	81	76	73	87	81	76	73	80	75	73	79	75	72	78	74	72	71
9	86	78	74	71	85	78	74	71	77	73	70	76	73	70	76	72	70	69
10	83	76	71	68	83	76	71	68	75	71	68	74	71	68	74	70	68	67

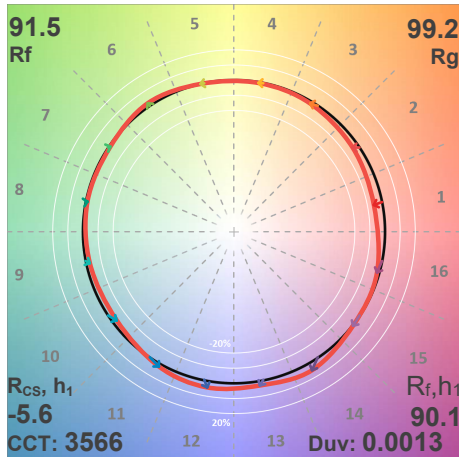
LAMPS (number of lamps)

## Luminaire Budgetary Diagram

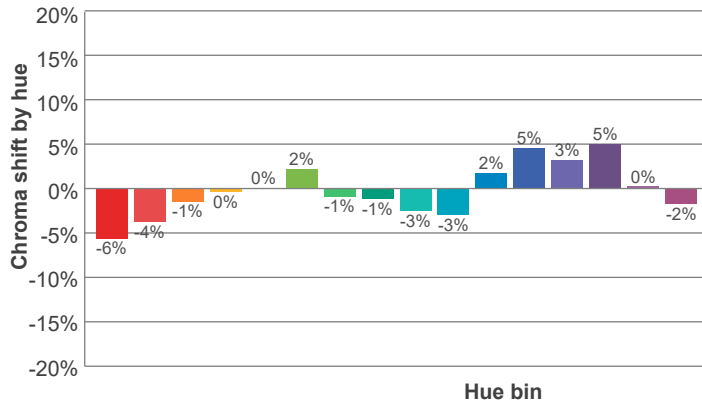
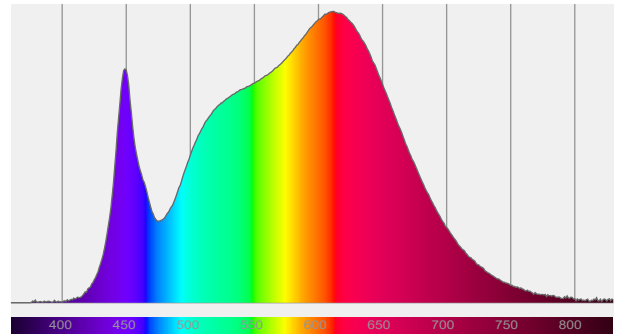
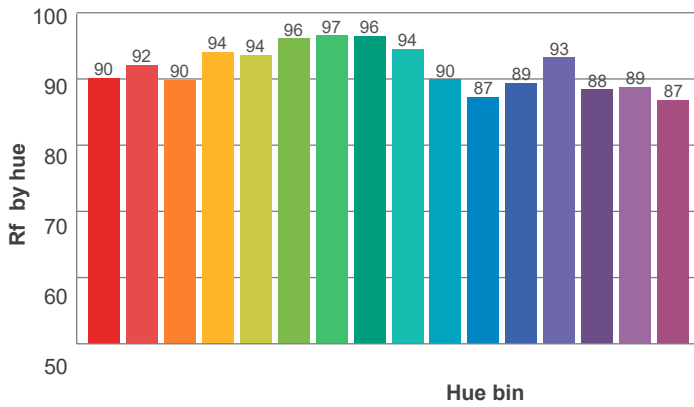
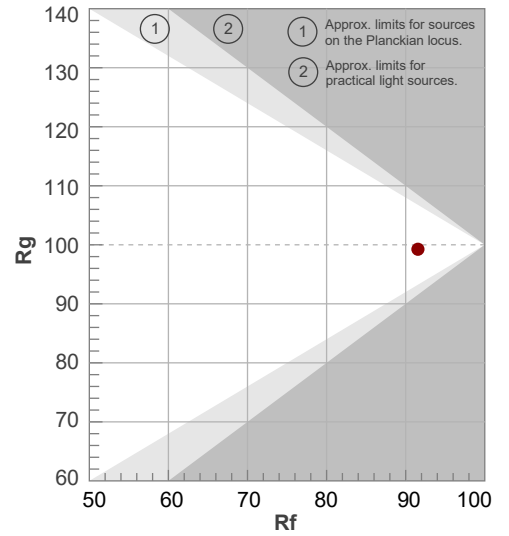


Conditions		
H = Room height		
Hdown	Lamp distance from ceiling	0.00m
Hwork	Work area height from floor	0.00m
Ework	Average lux on work area	100lx
p(%)	Ceiling reflectance	Wall reflectance
-----	70	50
—————	50	30
		20

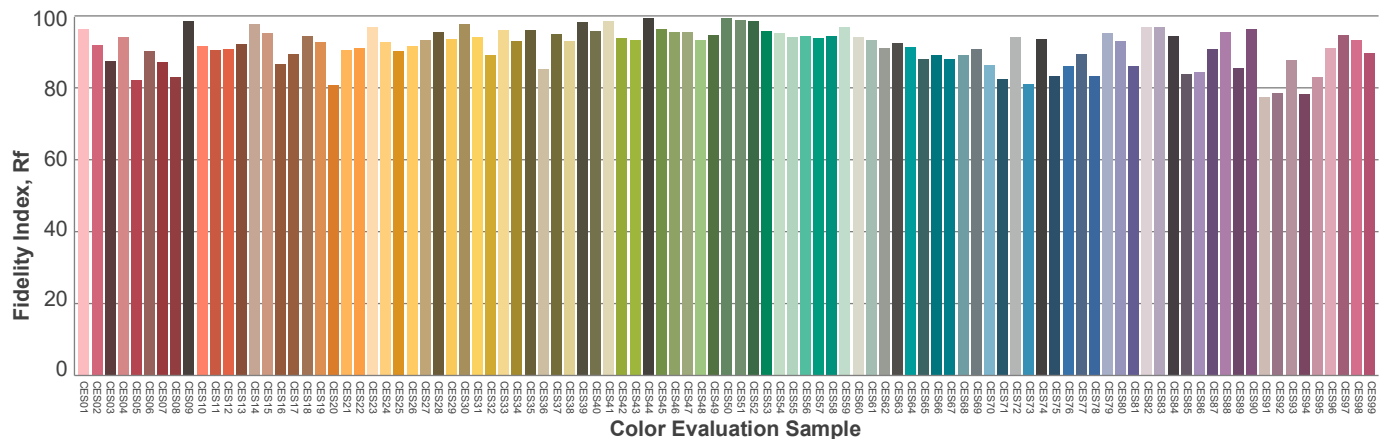
ANSI/IES TM-30-18 P: 2 / V: - / F: 2



Hue Bin	R <sub>f</sub>	Shifts (%)	
		Chroma	Hue
1	90	-6%	-1%
2	92	-4%	3%
3	90	-1%	5%
4	94	0%	3%
5	94	0%	2%
6	96	2%	0%
7	97	-1%	-1%
8	96	-1%	-1%
9	94	-3%	2%
10	90	-3%	6%
11	87	2%	8%
12	89	5%	3%
13	93	3%	-3%
14	88	5%	-8%
15	89	0%	-8%
16	87	-2%	-8%



Red: 31.3%, Power=4.6mW  
 Blue: 10.2%, Power=3.4mW  
 Green: 28%, Power=7.9mW  
 UVA: 0%, Power=0.0mW  
 Dominant Wavelength: 582nm  
 1<sup>st</sup> Peak Wavelength: 612nm  
 2<sup>nd</sup> Peak Wavelength: 449nm



**Glare Evaluation According to UGR**

Corrected, comprehensive UGR table according to 117-1995, S/H ratio=0.25

p Ceiling	70	70	50	50	30	70	70	50	50	30	
p Walls	50	30	50	30	30	50	30	50	30	30	
p Floor	20	20	20	20	20	20	20	20	20	20	
Room size H = mounting height above eye level X Y	Viewing direction at right angles to lamp axis					Viewing direction parallel to lamp axis					
2H	2H	20.8	21.3	20.9	21.5	21.7	20.8	21.3	20.9	21.5	21.7
	3H	21.5	22.2	21.9	22.4	22.6	21.5	22.2	21.9	22.4	22.6
	4H	22.0	22.6	22.4	22.9	23.1	22.0	22.6	22.4	22.9	23.1
	6H	22.4	22.9	22.7	23.2	23.6	22.4	22.9	22.7	23.2	23.6
	8H	22.5	23.0	22.8	23.3	23.7	22.5	23.0	22.8	23.3	23.7
	12H	22.5	23.0	22.9	23.4	23.8	22.5	23.0	22.9	23.4	23.8
4H	2H	21.0	21.6	21.4	21.8	22.1	21.0	21.6	21.4	21.8	22.1
	3H	22.2	22.7	22.5	23.0	23.4	22.2	22.7	22.5	23.0	23.4
	4H	22.7	23.2	23.1	23.6	24.1	22.7	23.2	23.1	23.6	24.1
	6H	23.1	23.7	23.6	24.0	24.3	23.1	23.7	23.6	24.0	24.3
	8H	23.3	23.7	23.8	24.1	24.5	23.3	23.7	23.8	24.1	24.5
	12H	23.3	23.7	23.8	24.1	24.6	23.3	23.7	23.8	24.1	24.6
8H	4H	22.9	23.4	23.4	23.7	24.1	22.9	23.4	23.4	23.7	24.1
	6H	23.5	23.8	24.0	24.3	24.8	23.5	23.8	24.0	24.3	24.8
	8H	23.7	24.0	24.2	24.5	25.1	23.7	24.0	24.2	24.5	25.1
	12H	23.8	24.0	24.4	24.5	25.1	23.8	24.0	24.4	24.5	25.1
12H	4H	22.9	23.2	23.4	23.6	24.1	22.9	23.2	23.4	23.6	24.1
	6H	23.6	23.8	24.1	24.3	24.9	23.6	23.8	24.1	24.3	24.9
	8H	23.8	24.0	24.4	24.5	25.1	23.8	24.0	24.4	24.5	25.1
Variation of the observer position for the luminaire distance S											
S = 1.0H	0.5 / -0.4					0.5 / -0.4					
S = 1.5H	1.2 / -0.7					1.2 / -0.7					
S = 2.0H	2.0 / -1.0					2.0 / -1.0					
Corrected glare indices referring to 608 lm total luminous flux											

Due to our continued efforts to improve our products, product specifications are subject to change without notice. Please refer to our website for the latest test results.