

Light efficiency:

83 Lumen/Watt

Color temperature:

3513 K

Light quality:

CRI:93.4, R<sub>g</sub>:95.8, R<sub>f</sub>:90.0

P: 2 / V: - / F: 3

Output: 358 lm

Peak: 134 cd

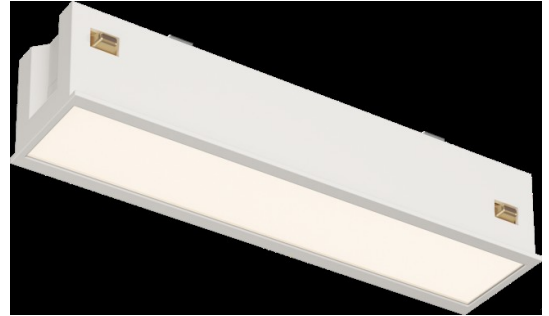
Power: 4.3 W

Voltage: 24.0 V

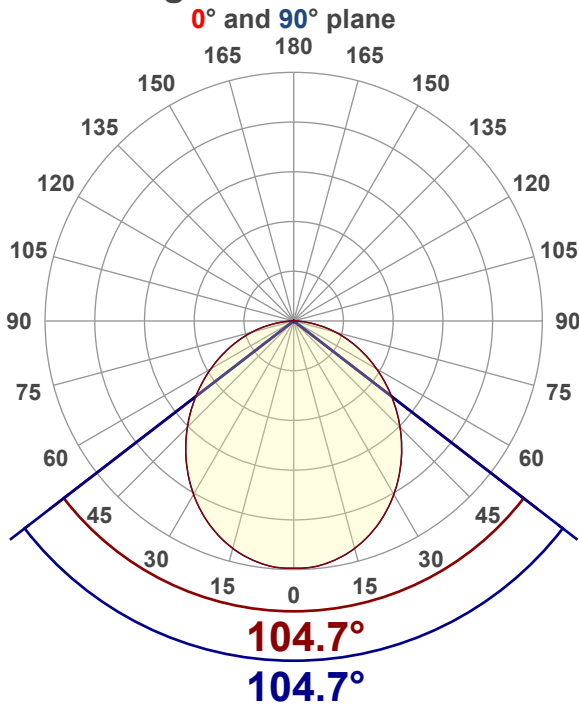
Current: 0.179 A

PF: 1.0

THD: 0 %



Angular Distribution



Product name:

AT-LINE5-OL-XX

Test Date:

3/30/2026

Beam Angle (50% of the brightness of the centre):  
 104.7°

Field Angle (10% of the brightness of the centre):  
 161.1°

Cut Off Angle (2.5% of the brightness of the centre):  
 174°

Beam Details

\*measured at centre of beam

Mounting Height (feet)\(meter)	Lux*	Footcandles*	Beam width (feet) / (meter)
4 ft / 1.2 m	90 lx	8 fc	10.4 ft / 3.2 m
8 ft / 2.4 m	23 lx	2 fc	20.8 ft / 6.3 m
12 ft / 3.7 m	10 lx	1 fc	31.1 ft / 9.5 m
16 ft / 4.9m	6 lx	1 fc	41.5 ft / 12.7 m
20 ft / 6.1m	4 lx	0 fc	51.9 ft / 15.8 m

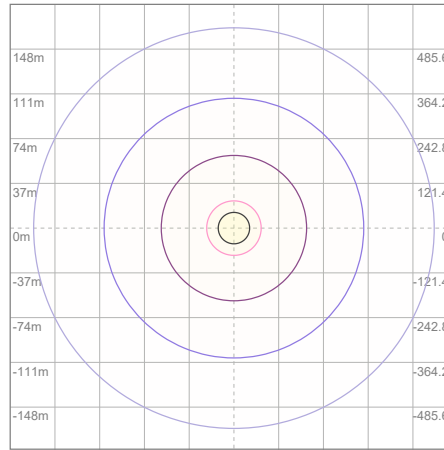
Beam center

# Photometric Testing Report

## Zonal Lumen Summary

Zone	Lumen	%Luminaire
0-30	102	28.49%
0-40	165	46.09%
0-60	284	79.33%
60-90	73.7	20.59%
70-100	31.9	8.91%
90-120	0.205	0.06%
0-90	357	99.72%
90-180	0.449	0.13%
0-180	358	100.00%

## ISO Lux Diagram



Lux at center:		14 lx
3%	0.42 lx	
5%	0.70 lx	
10%	1.40 lx	
30%	4.20 lx	
50%	7.00 lx	

**Conditions:**  
 Number of planes: 8  
 Lux distribution on a surface when lamp is mounted at 3.05 meters from the surface.

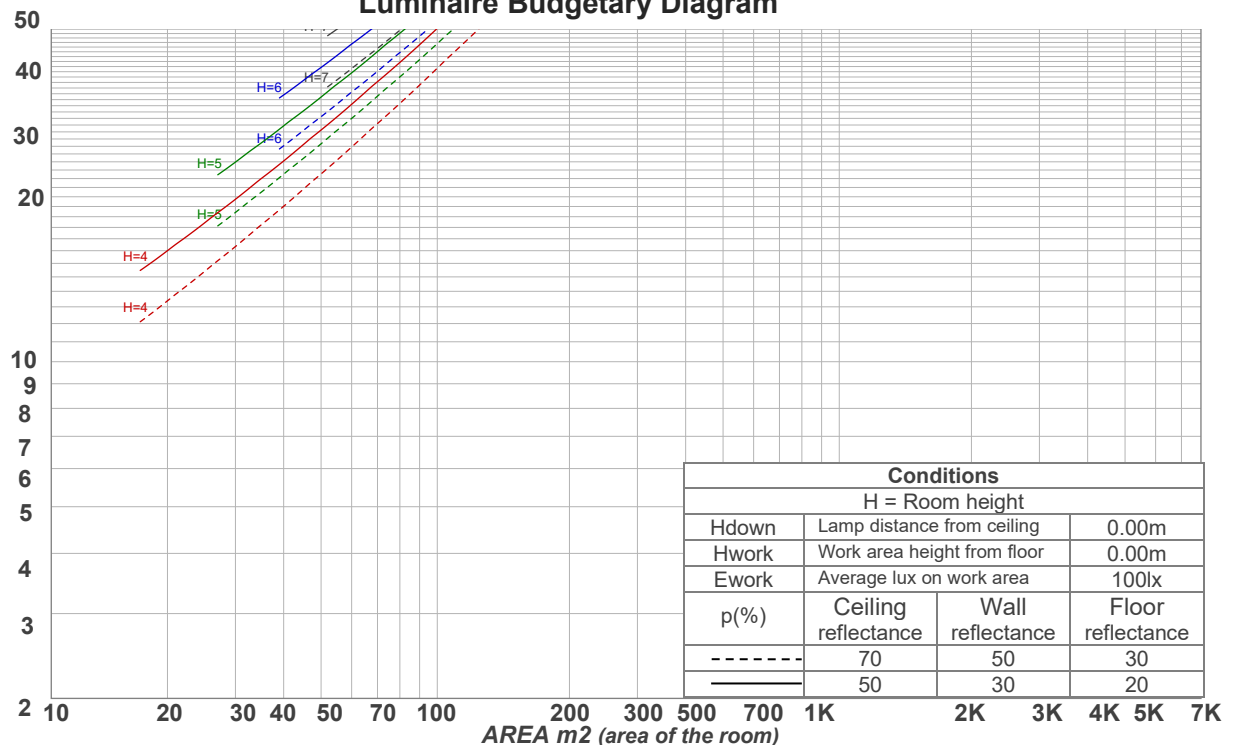
Mounting height: 3.05 meters (10 feet)

## Coefficients of Utilization

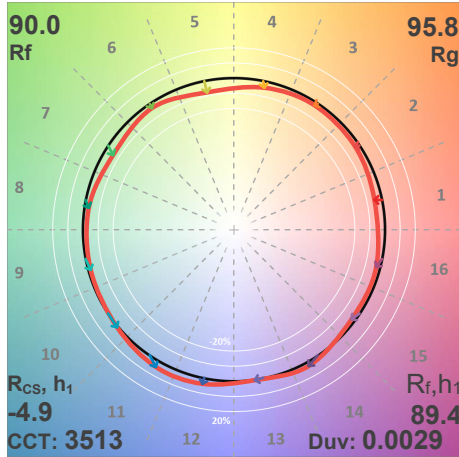
Ceiling reflectance	80				70				50			30			10			0
	70	50	30	10	70	50	30	10	50	30	10	50	30	10	50	30	10	0
Wall reflectance	70	50	30	10	70	50	30	10	50	30	10	50	30	10	50	30	10	0
Floor reflectance	20	20	20	20	20	20	20	20	20	20	20	20	20	20	20	20	20	0
<b>RCR</b>	<b>(RCR: Room Cavity Ratio)</b>																	
	Room Values are expressed as percentage of Lumens delivered to the task surface																	
0	119	119	119	119	116	116	116	116	111	111	111	106	106	106	102	102	102	100
1	109	104	100	96	106	102	98	94	97	94	91	94	91	88	90	88	86	84
2	99	91	84	78	96	89	83	77	85	80	75	82	78	74	79	75	72	70
3	90	80	72	65	88	78	71	65	75	69	63	72	67	62	70	65	61	59
4	83	71	62	55	80	69	61	55	67	60	54	65	58	53	62	57	53	51
5	76	63	54	48	74	62	54	48	60	53	47	58	52	46	56	51	46	44
6	70	57	48	42	69	56	48	42	54	47	41	53	46	41	51	45	41	38
7	65	52	43	37	64	51	43	37	50	42	37	48	41	36	47	41	36	34
8	61	47	39	33	59	47	39	33	45	38	33	44	37	33	43	37	32	30
9	57	44	35	30	55	43	35	30	42	35	30	41	34	29	40	34	29	27
10	53	40	32	27	52	40	32	27	39	32	27	38	31	27	37	31	27	25

LAMPS (number of lamps)

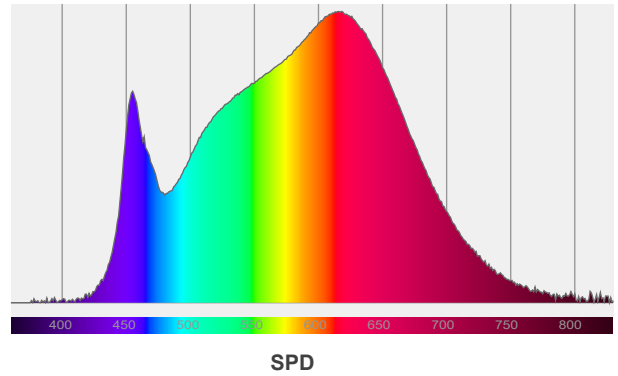
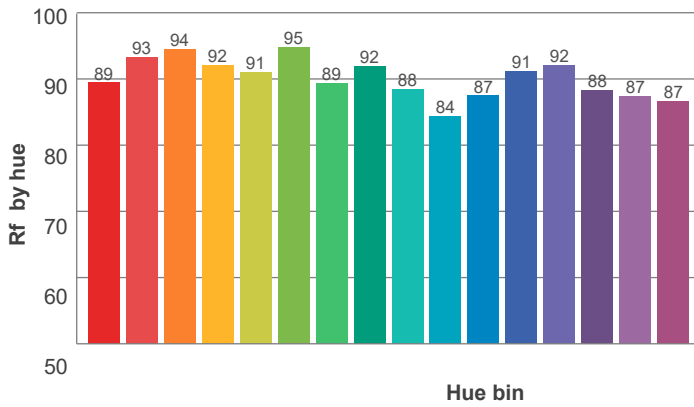
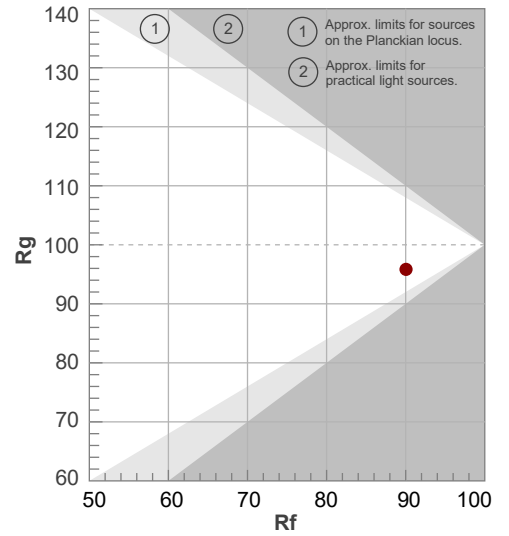
## Luminaire Budgetary Diagram



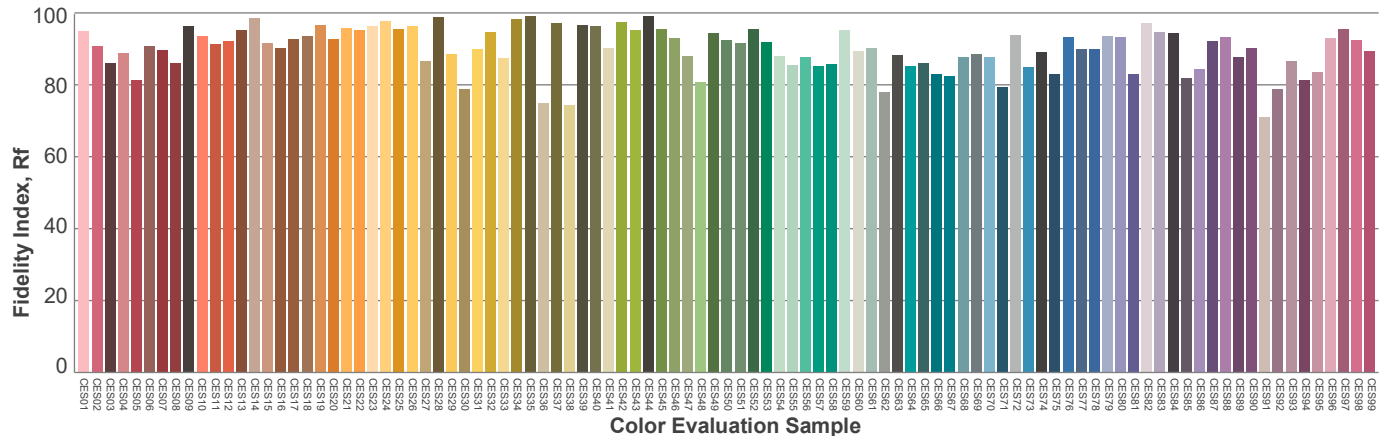
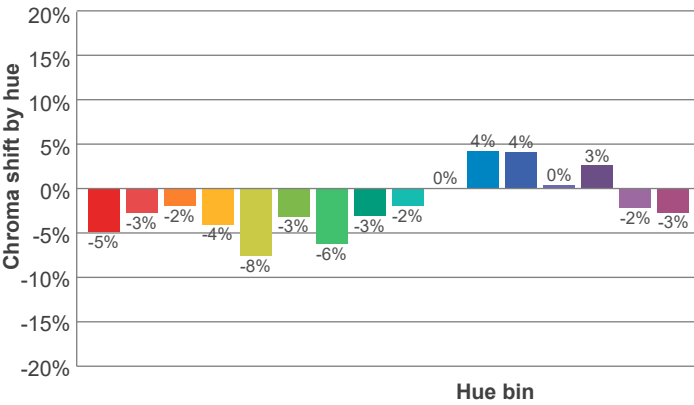
ANSI/IES TM-30-18 P: 2 / V: - / F: 3



Hue Bin	R <sub>r</sub>	Shifts (%)	
		Chroma	Hue
1	89	-5%	1%
2	93	-3%	1%
3	94	-2%	1%
4	92	-4%	-1%
5	91	-8%	0%
6	95	-3%	0%
7	89	-6%	3%
8	92	-3%	5%
9	88	-2%	8%
10	84	0%	11%
11	87	4%	8%
12	91	4%	0%
13	92	0%	-6%
14	88	3%	-9%
15	87	-2%	-6%
16	87	-3%	-6%



Red: 33.5%, Power=3.09mW  
Blue: 12%, Power=3.00mW  
Green: 26.9%, Power=4.59mW  
UVA: 0.1%, Power=0.00mW  
Dominant Wavelength: 581nm  
1<sup>st</sup> Peak Wavelength: 618nm  
2<sup>nd</sup> Peak Wavelength: 455nm



**Glare Evaluation According to UGR**

Corrected, comprehensive UGR table according to 117-1995, S/H ratio=0.25

p Ceiling		70	70	50	50	30	70	70	50	50	30
p Walls		50	30	50	30	30	50	30	50	30	30
p Floor		20	20	20	20	20	20	20	20	20	20
Room size		Viewing direction at right angles to lamp axis					Viewing direction parallel to lamp axis				
H = mounting height above eye level											
X Y											
2H	2H	26.2	27.4	26.4	27.7	27.9	26.2	27.4	26.4	27.7	27.9
	3H	27.7	28.9	28.1	29.2	29.4	27.7	28.9	28.1	29.2	29.4
	4H	28.3	29.5	28.7	29.8	30.1	28.3	29.5	28.7	29.8	30.1
	6H	28.9	29.9	29.2	30.2	30.6	28.9	29.9	29.2	30.2	30.6
	8H	29.0	30.1	29.4	30.4	30.8	29.0	30.1	29.4	30.4	30.8
	12H	29.1	30.1	29.5	30.5	30.9	29.1	30.1	29.5	30.5	30.9
4H	2H	26.8	28.0	27.2	28.3	28.5	26.8	28.0	27.2	28.3	28.5
	3H	28.6	29.6	29.0	29.9	30.4	28.6	29.6	29.0	29.9	30.4
	4H	29.3	30.2	29.7	30.6	31.2	29.3	30.2	29.7	30.6	31.2
	6H	29.9	30.8	30.4	31.2	31.5	29.9	30.8	30.4	31.2	31.5
	8H	30.1	30.9	30.6	31.3	31.7	30.1	30.9	30.6	31.3	31.7
	12H	30.3	30.9	30.8	31.4	31.9	30.3	30.9	30.8	31.4	31.9
8H	4H	29.6	30.4	30.1	30.8	31.2	29.6	30.4	30.1	30.8	31.2
	6H	30.4	31.0	30.9	31.5	32.0	30.4	31.0	30.9	31.5	32.0
	8H	30.7	31.3	31.2	31.8	32.4	30.7	31.3	31.2	31.8	32.4
	12H	30.9	31.4	31.5	31.9	32.5	30.9	31.4	31.5	31.9	32.5
12H	4H	29.6	30.3	30.1	30.7	31.2	29.6	30.3	30.1	30.7	31.2
	6H	30.5	31.0	31.0	31.5	32.2	30.5	31.0	31.0	31.5	32.2
	8H	30.8	31.3	31.4	31.8	32.4	30.8	31.3	31.4	31.8	32.4
Variation of the observer position for the luminaire distance S											
S = 1.0H		0.1 / -0.1					0.1 / -0.1				
S = 1.5H		0.1 / -0.2					0.1 / -0.2				
S = 2.0H		0.4 / -0.5					0.4 / -0.5				
Corrected glare indices referring to 358 lm total luminous flux											

Due to our continued efforts to improve our products, product specifications are subject to change without notice. Please refer to our website for the latest test results.