

Light efficiency:

80 Lumen/Watt

Color temperature:

3010 K

Light quality:

CRI:93.3, R_g:98.7, R_f:92.7
P: 2 / V: - / F: 2

Output: 665 lm

Peak: 1360 cd

Power: 8.4 W

Voltage: 24.0 V

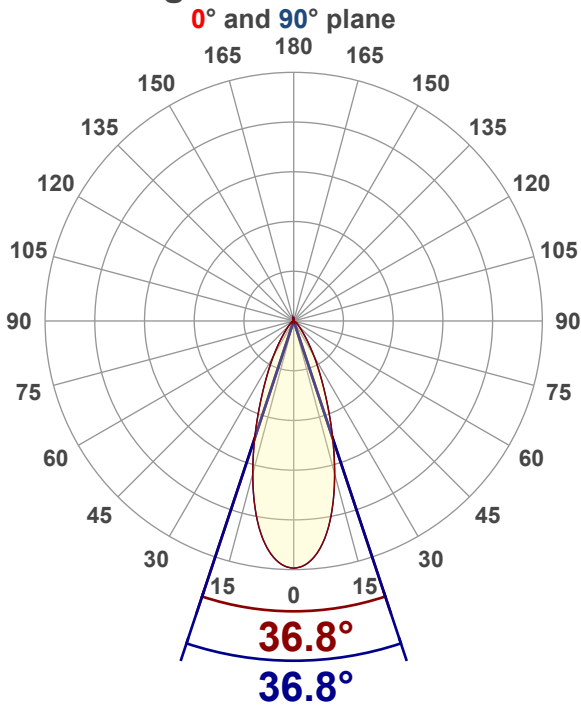
Current: 0.348 A

PF: 1.0

THD: 0 %



Angular Distribution



Product name:

AT-PIPE-S-3036-XX

Test Date:

2/25/2026

Beam Angle (50% of the brightness of the centre):
36.8°

Field Angle (10% of the brightness of the centre):
68.5°

Cut Off Angle (2.5% of the brightness of the centre):
93.7°

Beam Details

*measured at centre of beam

Mounting Height (feet)\(meter)	Lux*	Footcandles*	Beam width (feet) / (meter)
4 ft / 1.2 m	915 lx	85 fc	2.7 ft / 0.8 m
8 ft / 2.4 m	229 lx	21 fc	5.3 ft / 1.6 m
12 ft / 3.7 m	102 lx	9 fc	8 ft / 2.4 m
16 ft / 4.9m	57 lx	5 fc	10.6 ft / 3.2 m
20 ft / 6.1m	37 lx	3 fc	13.3 ft / 4.1 m

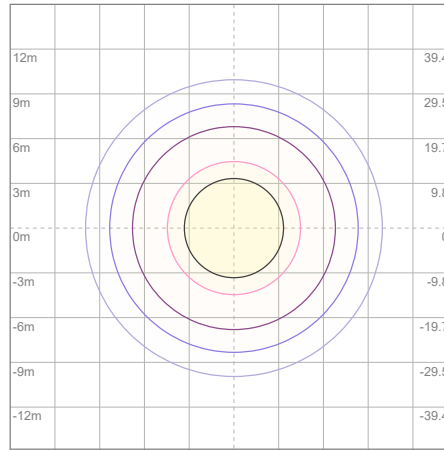
Beam center

Photometric Testing Report

Zonal Lumen Summary

Zone	Lumen	%Luminaire
0-30	529	79.55%
0-40	609	91.58%
0-60	655	98.50%
60-90	9.68	1.46%
70-100	3.79	0.57%
90-120	0.071	0.01%
0-90	665	100.00%
90-180	0.350	0.05%
0-180	665	100.00%

ISO Lux Diagram



Lux at center:	146 lx
3%	4.38 lx
5%	7.30 lx
10%	14.60 lx
30%	43.80 lx
50%	73.00 lx

Conditions:
 Number of planes: 8
 Lux distribution on a surface when lamp is mounted at 3.05 meters from the surface.

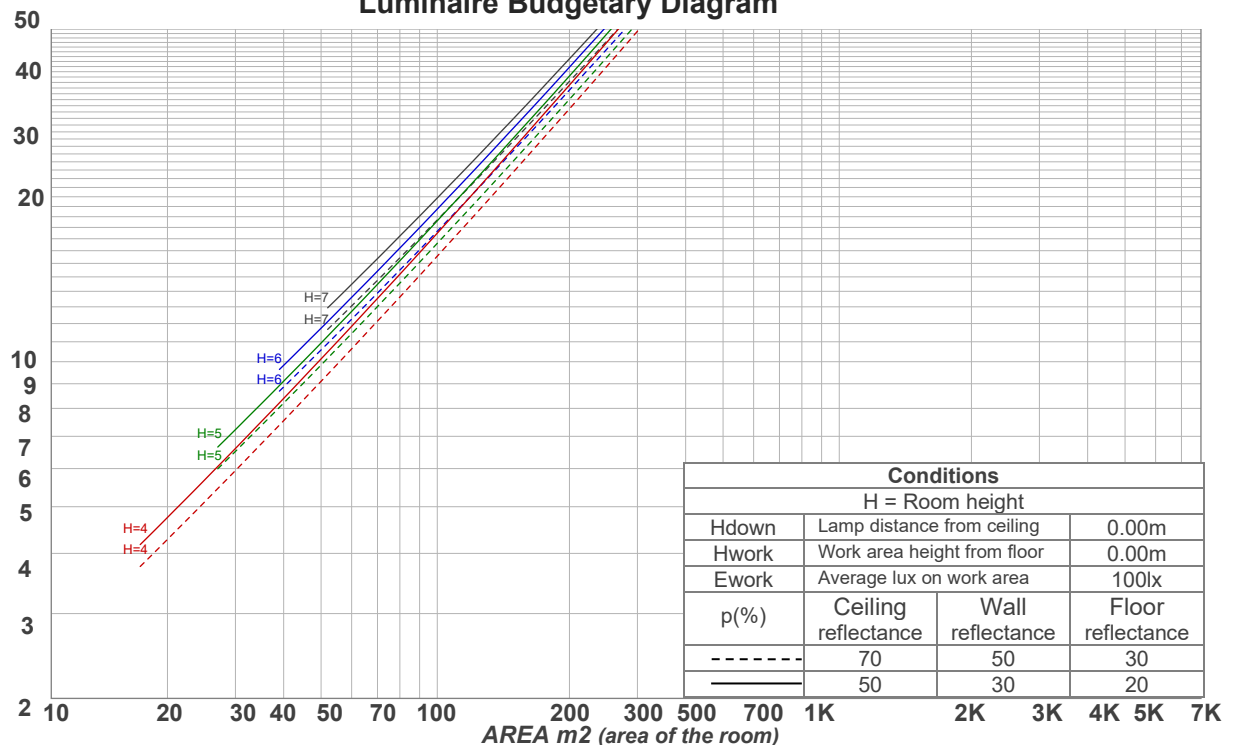
Mounting height: 3.05 meters (10 feet)

Coefficients of Utilization

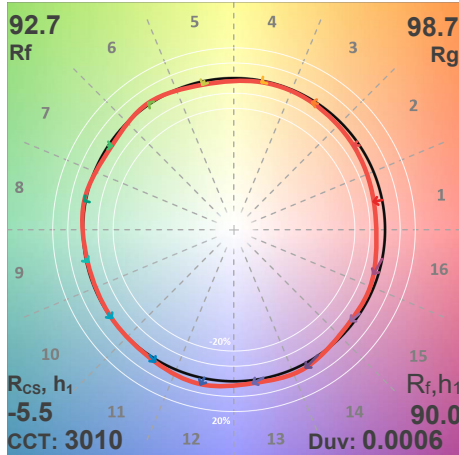
Ceiling reflectance	80				70				50			30			10			0
	70	50	30	10	70	50	30	10	50	30	10	50	30	10	50	30	10	0
Wall reflectance	70	50	30	10	70	50	30	10	50	30	10	50	30	10	50	30	10	0
Floor reflectance	20	20	20	20	20	20	20	20	20	20	20	20	20	20	20	20	20	0
RCR	(RCR: Room Cavity Ratio)																	
	Room Values are expressed as percentage of Lumens delivered to the task surface																	
0	119	119	119	119	116	116	116	116	111	111	111	106	106	106	102	102	102	100
1	114	111	109	107	111	109	107	105	105	103	102	101	100	99	98	97	96	94
2	109	104	100	97	106	102	99	96	99	96	94	96	94	92	93	92	90	88
3	104	98	93	89	102	96	92	89	94	90	87	91	88	86	89	87	85	83
4	99	92	87	83	97	91	86	83	89	85	82	87	84	81	85	82	80	78
5	95	87	82	78	93	86	81	77	84	80	77	83	79	76	81	78	75	74
6	91	83	77	73	89	82	77	73	80	76	72	79	75	72	78	74	72	70
7	87	78	73	69	86	78	73	69	77	72	69	75	71	68	74	71	68	67
8	83	75	69	66	82	74	69	65	73	69	65	72	68	65	71	67	65	63
9	80	71	66	62	79	71	66	62	70	65	62	69	65	62	68	65	62	61
10	77	68	63	60	76	68	63	59	67	62	59	66	62	59	66	62	59	58

LAMPS (number of lamps)

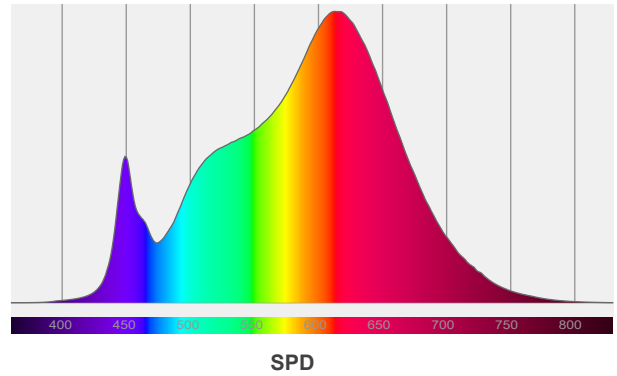
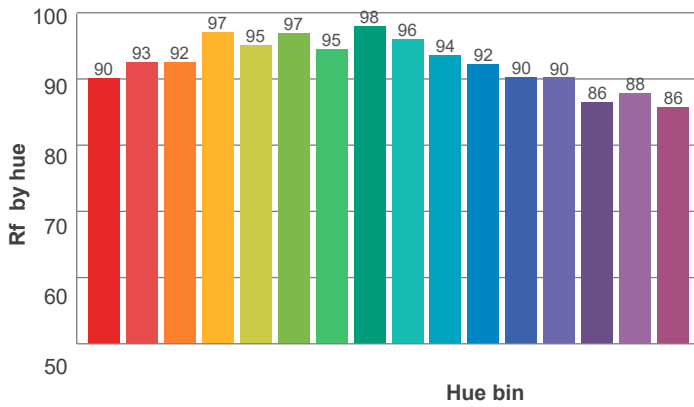
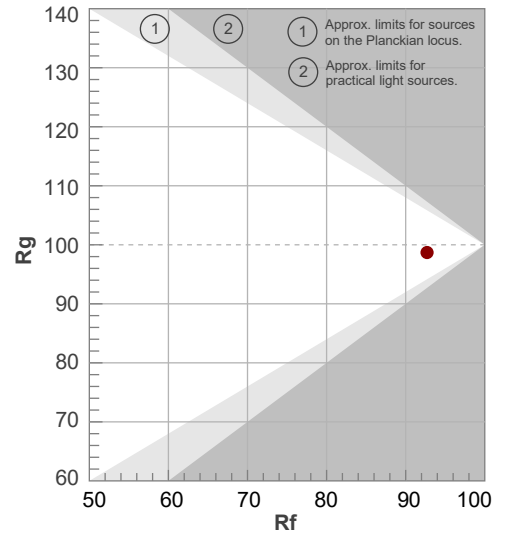
Luminaire Budgetary Diagram



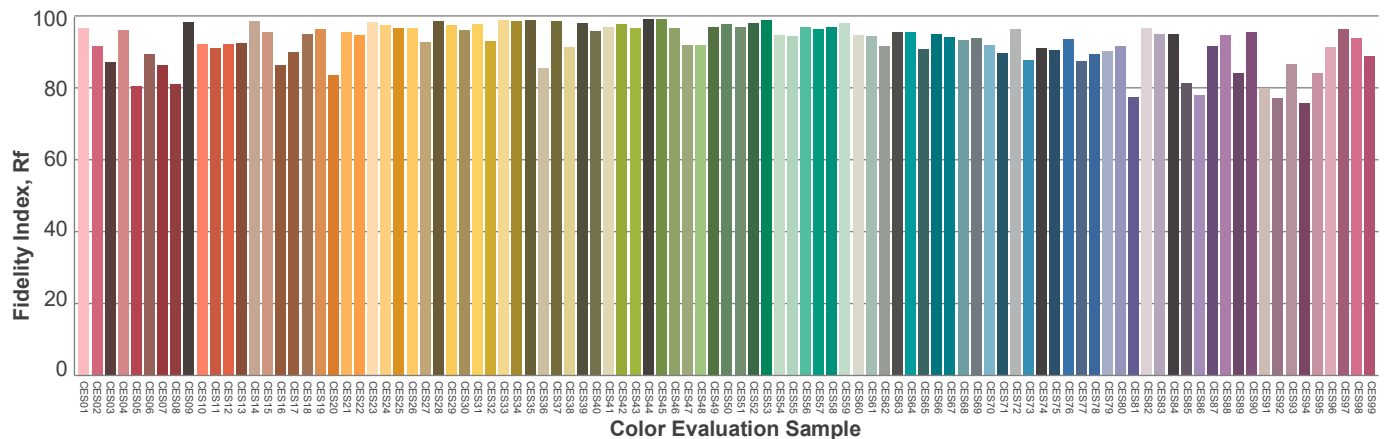
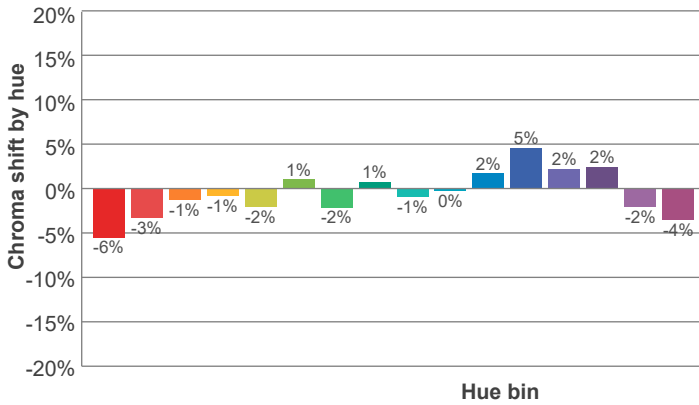
ANSI/IES TM-30-18 P: 2 / V: - / F: 2



Hue Bin	R _f	Shifts (%)	
		Chroma	Hue
1	90	-6%	0%
2	93	-3%	2%
3	92	-1%	4%
4	97	-1%	1%
5	95	-2%	2%
6	97	1%	0%
7	95	-2%	-1%
8	98	1%	1%
9	96	-1%	2%
10	94	0%	4%
11	92	2%	5%
12	90	5%	-1%
13	90	2%	-7%
14	86	2%	-11%
15	88	-2%	-7%
16	86	-4%	-11%



Red: 34.7%, Power=5.3mW
 Blue: 8.4%, Power=3.0mW
 Green: 25.9%, Power=7.8mW
 UVA: 0%, Power=0.0mW
 Dominant Wavelength: 583nm
 1st Peak Wavelength: 614nm
 2nd Peak Wavelength: 450nm



Glare Evaluation According to UGR

Corrected, comprehensive UGR table according to 117-1995, S/H ratio=0.25

p Ceiling		70	70	50	50	30	70	70	50	50	30
p Walls		50	30	50	30	30	50	30	50	30	30
p Floor		20	20	20	20	20	20	20	20	20	20
Room size		Viewing direction at right angles to lamp axis					Viewing direction parallel to lamp axis				
H = mounting height above eye level											
X Y											
2H	2H	14.0	14.5	14.1	14.8	14.9	14.0	14.5	14.1	14.8	14.9
	3H	13.9	14.6	14.2	14.8	15.0	13.9	14.6	14.2	14.8	15.0
	4H	13.9	14.6	14.3	14.8	15.0	13.9	14.6	14.3	14.8	15.0
	6H	14.0	14.5	14.2	14.8	15.2	14.0	14.5	14.2	14.8	15.2
	8H	13.9	14.5	14.2	14.8	15.2	13.9	14.5	14.2	14.8	15.2
	12H	13.9	14.4	14.2	14.8	15.2	13.9	14.4	14.2	14.8	15.2
4H	2H	13.7	14.4	14.1	14.7	14.9	13.7	14.4	14.1	14.7	14.9
	3H	13.9	14.4	14.3	14.8	15.2	13.9	14.4	14.3	14.8	15.2
	4H	13.9	14.4	14.3	14.8	15.3	13.9	14.4	14.3	14.8	15.3
	6H	13.9	14.5	14.4	14.8	15.1	13.9	14.5	14.4	14.8	15.1
	8H	13.9	14.4	14.4	14.7	15.1	13.9	14.4	14.4	14.7	15.1
	12H	13.9	14.3	14.4	14.7	15.1	13.9	14.3	14.4	14.7	15.1
8H	4H	13.8	14.3	14.4	14.7	15.0	13.8	14.3	14.4	14.7	15.0
	6H	13.9	14.2	14.4	14.7	15.2	13.9	14.2	14.4	14.7	15.2
	8H	14.0	14.2	14.5	14.7	15.4	14.0	14.2	14.5	14.7	15.4
	12H	13.9	14.2	14.5	14.7	15.3	13.9	14.2	14.5	14.7	15.3
12H	4H	13.8	14.2	14.3	14.6	15.0	13.8	14.2	14.3	14.6	15.0
	6H	13.9	14.2	14.4	14.7	15.3	13.9	14.2	14.4	14.7	15.3
	8H	13.9	14.1	14.5	14.6	15.2	13.9	14.1	14.5	14.6	15.2
Variation of the observer position for the luminaire distance S											
S = 1.0H		3.4 / -3.0					3.4 / -3.0				
S = 1.5H		5.7 / -4.3					5.7 / -4.3				
S = 2.0H		7.5 / -4.9					7.5 / -4.9				
Corrected glare indices referring to 665 lm total luminous flux											

Due to our continued efforts to improve our products, product specifications are subject to change without notice. Please refer to our website for the latest test results.