

Light efficiency:

78 Lumen/Watt

Color temperature:

3549 K

Light quality:

CRI:93.1, R_g:95.8, R_f:89.9

P: 2 / V: - / F: 3

Output: 350 lm

Peak: 497 cd

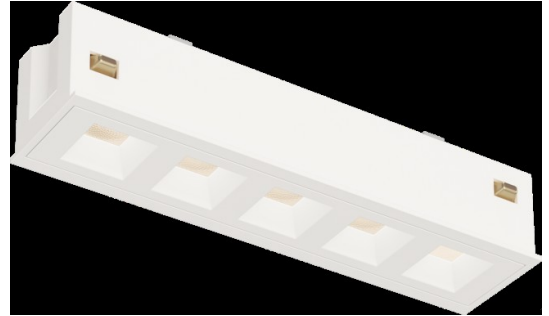
Power: 4.5 W

Voltage: 24.0 V

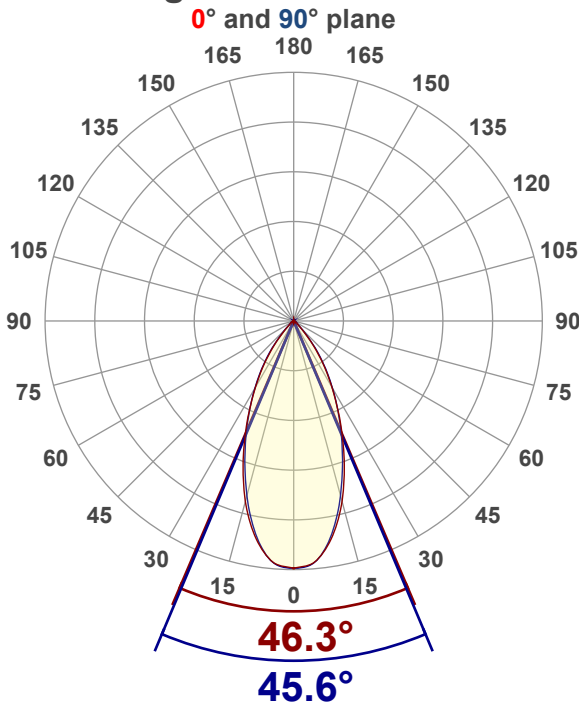
Current: 0.186 A

PF: 1.0

THD: 0 %



Angular Distribution



Product name:

AT-LINE5-3536-XX

Test Date:

3/26/2026

Beam Angle (50% of the brightness of the centre):
45.7°

Field Angle (10% of the brightness of the centre):
83.6°

Cut Off Angle (2.5% of the brightness of the centre):
102.1°

Beam Details

*measured at centre of beam

Mounting Height (feet)\(meter)	Lux*	Footcandles*	Beam width (feet) / (meter)
4 ft / 1.2 m	332 lx	31 fc	3.4 ft / 1 m
8 ft / 2.4 m	83 lx	8 fc	6.7 ft / 2.1 m
12 ft / 3.7 m	37 lx	3 fc	10.1 ft / 3.1 m
16 ft / 4.9m	21 lx	2 fc	13.5 ft / 4.1 m
20 ft / 6.1m	13 lx	1 fc	16.9 ft / 5.1 m

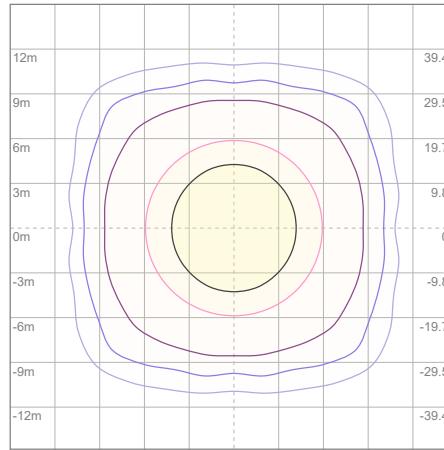
Beam center

Photometric Testing Report

Zonal Lumen Summary

Zone	Lumen	%Luminaire
0-30	244	69.71%
0-40	308	88.00%
0-60	342	97.71%
60-90	8.02	2.29%
70-100	3.31	0.95%
90-120	0.184	0.05%
0-90	350	100.00%
90-180	0.550	0.16%
0-180	350	100.00%

ISO Lux Diagram



Lux at center:	53 lx
3%	1.59 lx
5%	2.65 lx
10%	5.30 lx
30%	15.90 lx
50%	26.50 lx

Conditions:
 Number of planes: 8
 Lux distribution on a surface when lamp is mounted at 3.05 meters from the surface.

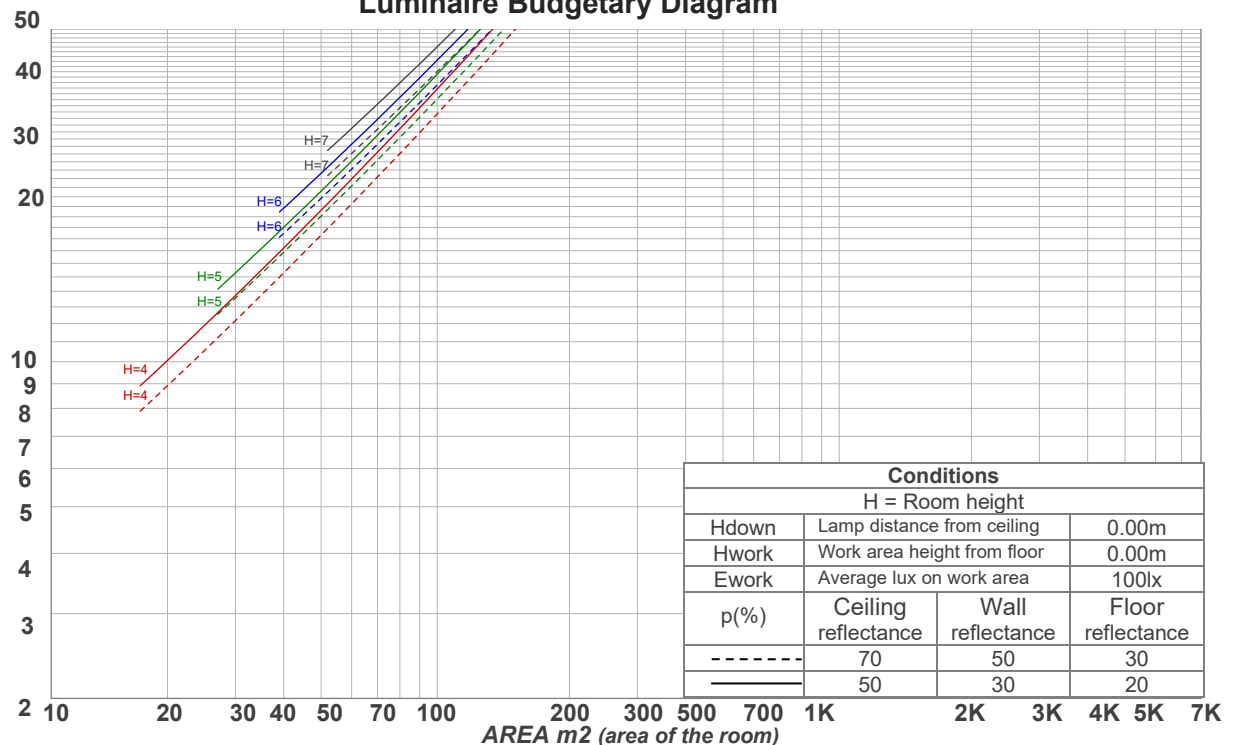
Mounting height: 3.05 meters (10 feet)

Coefficients of Utilization

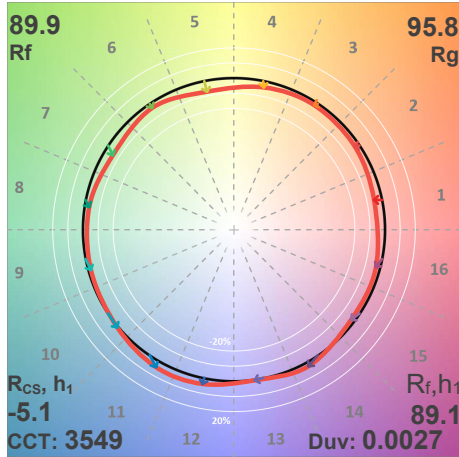
Ceiling reflectance	80				70				50			30			10			0
	70	50	30	10	70	50	30	10	50	30	10	50	30	10	50	30	10	0
Wall reflectance	70	50	30	10	70	50	30	10	50	30	10	50	30	10	50	30	10	0
Floor reflectance	20	20	20	20	20	20	20	20	20	20	20	20	20	20	20	20	20	0
RCR	(RCR: Room Cavity Ratio)																	
	Room Values are expressed as percentage of Lumens delivered to the task surface																	
0	119	119	119	119	116	116	116	116	111	111	111	106	106	106	102	102	102	100
1	113	110	108	105	111	108	106	104	104	102	101	100	99	97	97	96	95	93
2	107	102	98	95	105	101	97	94	97	94	92	94	92	90	92	90	88	86
3	102	95	90	86	100	94	89	85	91	87	84	89	85	83	86	84	81	80
4	97	89	83	79	95	88	83	79	86	81	78	84	80	77	82	78	76	74
5	92	83	77	73	90	82	77	73	81	76	72	79	75	71	77	74	71	69
6	87	78	72	68	86	77	72	68	76	71	67	75	70	67	73	69	66	65
7	83	74	68	63	82	73	67	63	72	67	63	71	66	63	69	65	62	61
8	79	70	64	59	78	69	63	59	68	63	59	67	62	59	66	62	59	57
9	75	66	60	56	74	65	60	56	64	59	56	63	59	55	63	58	55	54
10	72	62	57	53	71	62	56	53	61	56	53	60	56	52	60	55	52	51

LAMPS (number of lamps)

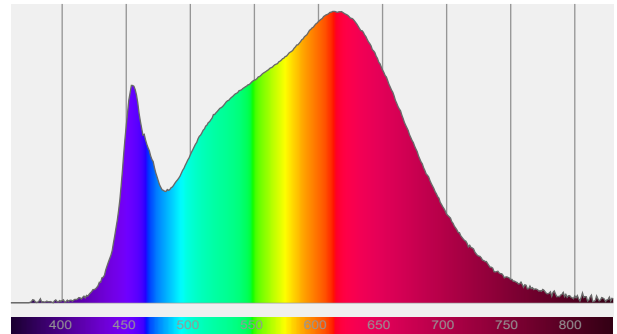
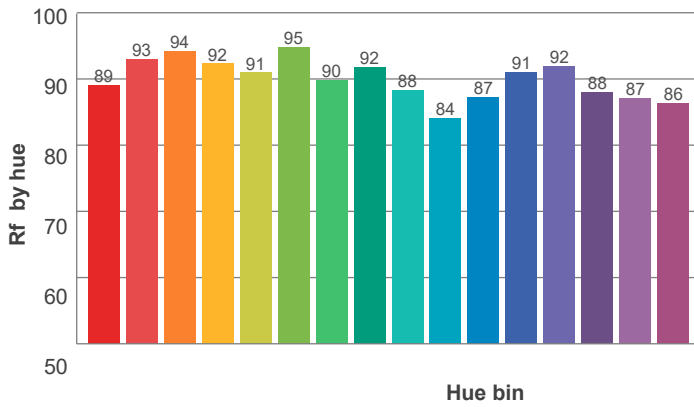
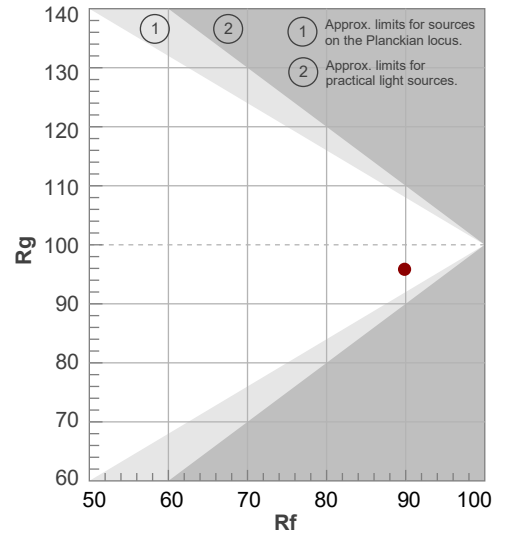
Luminaire Budgetary Diagram



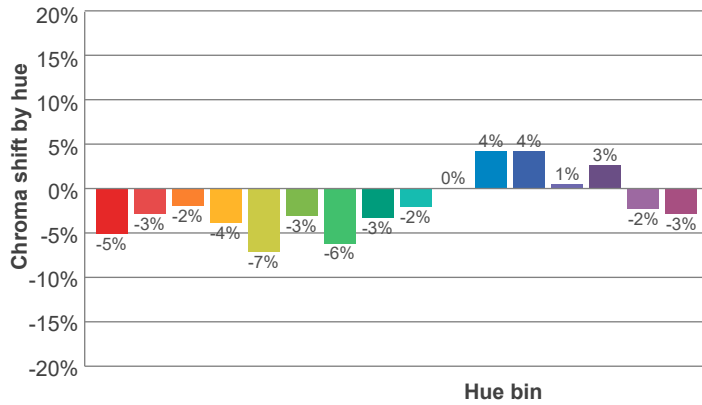
ANSI/IES TM-30-18 P: 2 / V: - / F: 3



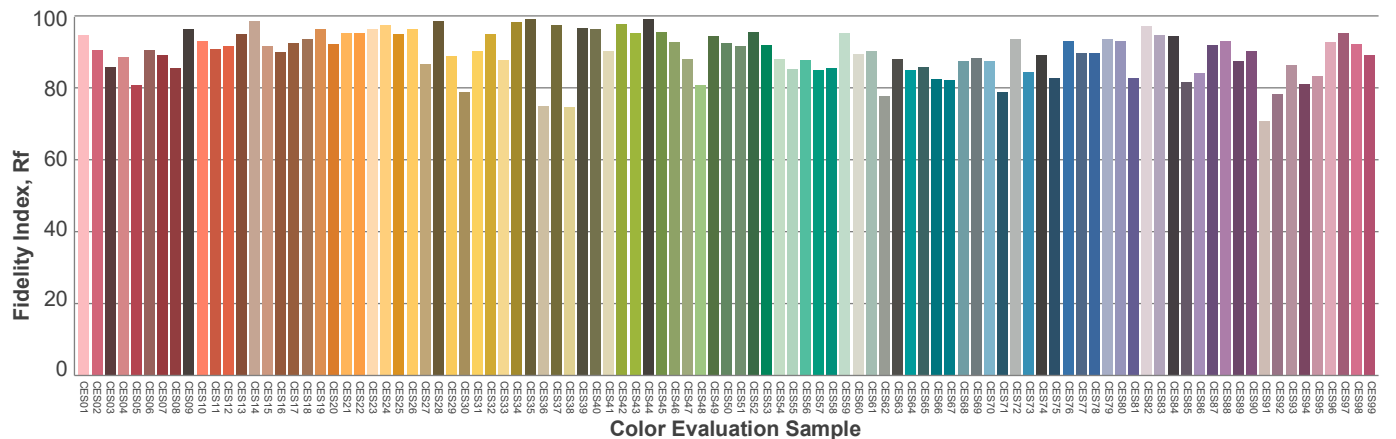
Hue Bin	R _f	Shifts (%)	
		Chroma	Hue
1	89	-5%	1%
2	93	-3%	1%
3	94	-2%	2%
4	92	-4%	-1%
5	91	-7%	0%
6	95	-3%	0%
7	90	-6%	4%
8	92	-3%	4%
9	88	-2%	8%
10	84	0%	11%
11	87	4%	8%
12	91	4%	0%
13	92	1%	-6%
14	88	3%	-9%
15	87	-2%	-6%
16	86	-3%	-6%



SPD



Red: 33.1%, Power=2.97mW
 Blue: 12.3%, Power=3.02mW
 Green: 27%, Power=4.49mW
 UVA: 0.1%, Power=0.01mW
 Dominant Wavelength: 581nm
 1st Peak Wavelength: 612nm
 2nd Peak Wavelength: 454nm



Glare Evaluation According to UGR

Corrected, comprehensive UGR table according to 117-1995, S/H ratio=0.25

p Ceiling		70	70	50	50	30	70	70	50	50	30
p Walls		50	30	50	30	30	50	30	50	30	30
p Floor		20	20	20	20	20	20	20	20	20	20
Room size H = mounting height above eye level X Y		Viewing direction at right angles to lamp axis					Viewing direction parallel to lamp axis				
2H	2H	19.8	20.5	19.9	20.7	20.9	20.0	20.6	20.1	20.9	21.1
	3H	19.8	20.6	20.1	20.8	21.0	19.9	20.7	20.3	20.9	21.1
	4H	19.8	20.6	20.2	20.8	21.1	19.9	20.7	20.3	20.9	21.2
	6H	19.9	20.6	20.2	20.9	21.2	20.0	20.7	20.3	21.0	21.3
	8H	19.9	20.5	20.2	20.9	21.2	20.0	20.6	20.3	21.0	21.4
	12H	19.9	20.5	20.2	20.8	21.3	20.0	20.6	20.3	20.9	21.4
4H	2H	19.6	20.4	20.0	20.6	20.8	19.7	20.5	20.1	20.7	21.0
	3H	19.8	20.4	20.2	20.8	21.2	19.9	20.5	20.3	20.9	21.3
	4H	19.9	20.4	20.3	20.9	21.4	20.0	20.5	20.4	21.0	21.5
	6H	20.0	20.6	20.5	20.9	21.3	20.1	20.7	20.6	21.0	21.3
	8H	20.0	20.5	20.5	20.9	21.3	20.1	20.6	20.6	21.0	21.3
	12H	20.0	20.4	20.5	20.8	21.3	20.1	20.5	20.6	20.9	21.4
8H	4H	19.9	20.4	20.4	20.7	21.1	20.0	20.5	20.5	20.8	21.2
	6H	20.0	20.4	20.5	20.9	21.4	20.1	20.5	20.6	20.9	21.5
	8H	20.2	20.4	20.7	21.0	21.6	20.2	20.5	20.7	21.0	21.7
	12H	20.2	20.4	20.8	20.9	21.5	20.3	20.5	20.8	21.0	21.6
12H	4H	19.8	20.2	20.3	20.6	21.1	19.9	20.3	20.4	20.7	21.2
	6H	20.1	20.4	20.6	20.9	21.5	20.2	20.4	20.7	21.0	21.6
	8H	20.1	20.4	20.7	20.9	21.5	20.2	20.5	20.8	21.0	21.6
Variation of the observer position for the luminaire distance S											
S = 1.0H		2.9 / -2.8					2.9 / -3.0				
S = 1.5H		5.1 / -3.3					5.1 / -3.5				
S = 2.0H		6.9 / -3.8					6.9 / -4.0				
Corrected glare indices referring to 350 lm total luminous flux											

Due to our continued efforts to improve our products, product specifications are subject to change without notice. Please refer to our website for the latest test results.