

Light efficiency:

**94 Lumen/Watt**

Color temperature:

**3612 K**

Light quality:

**CRI:93.1, R<sub>g</sub>:95.9, R<sub>f</sub>:90.0**  
**P: 2 / V: - / F: 3**

**Output: 120 lm**

**Peak: 185 cd**

**Power: 1.3 W**

**Voltage: 24.0 V**

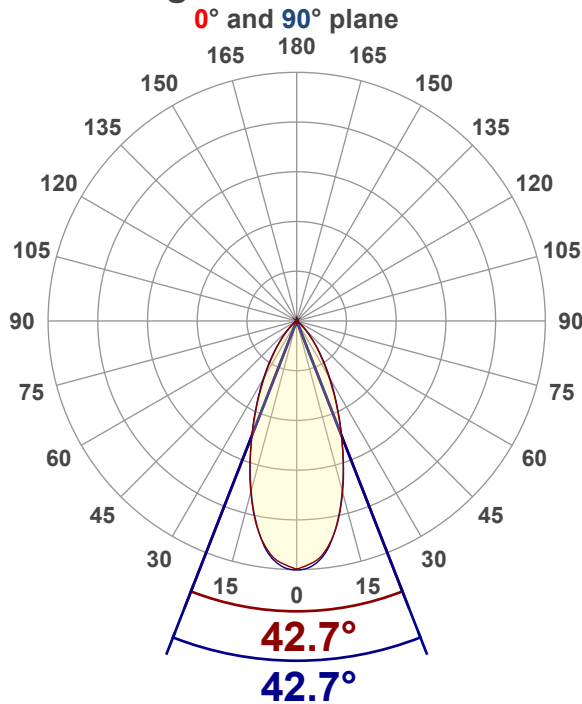
**Current: 0.053 A**

**PF: 1.0**

**THD: 0 %**



Angular Distribution



Product name:

**AT-DOT2-3536-XX**

Test Date:

**3/26/2026**

Beam Angle (50% of the brightness of the centre):  
**42.8°**

Field Angle (10% of the brightness of the centre):  
**80.8°**

Cut Off Angle (2.5% of the brightness of the centre):  
**102.5°**

Beam Details

\*measured at centre of beam

Mounting Height (feet)\(meter)	Lux*	Footcandles*	Beam width (feet) / (meter)
4 ft / 1.2 m	124 lx	12 fc	3.1 ft / 1 m
8 ft / 2.4 m	31 lx	3 fc	6.3 ft / 1.9 m
12 ft / 3.7 m	14 lx	1 fc	9.4 ft / 2.9 m
16 ft / 4.9m	8 lx	1 fc	12.5 ft / 3.8 m
20 ft / 6.1m	5 lx	0 fc	15.7 ft / 4.8 m

Beam center

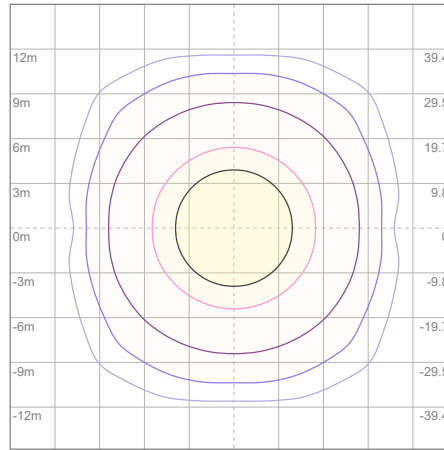
# Photometric Testing Report

Copyright © 2023. All rights reserved.

## Zonal Lumen Summary

Zone	Lumen	%Luminaire
0-30	86.0	71.67%
0-40	106	88.33%
0-60	117	97.50%
60-90	2.17	1.81%
70-100	0.935	0.78%
90-120	0.192	0.16%
0-90	120	100.00%
90-180	0.418	0.35%
0-180	120	100.00%

## ISO Lux Diagram



Lux at center:	20 lx
3%	0.60 lx
5%	1.00 lx
10%	2.00 lx
30%	6.00 lx
50%	10.00 lx

**Conditions:**  
 Number of planes: 8  
 Lux distribution on a surface when lamp is mounted at 3.05 meters from the surface.

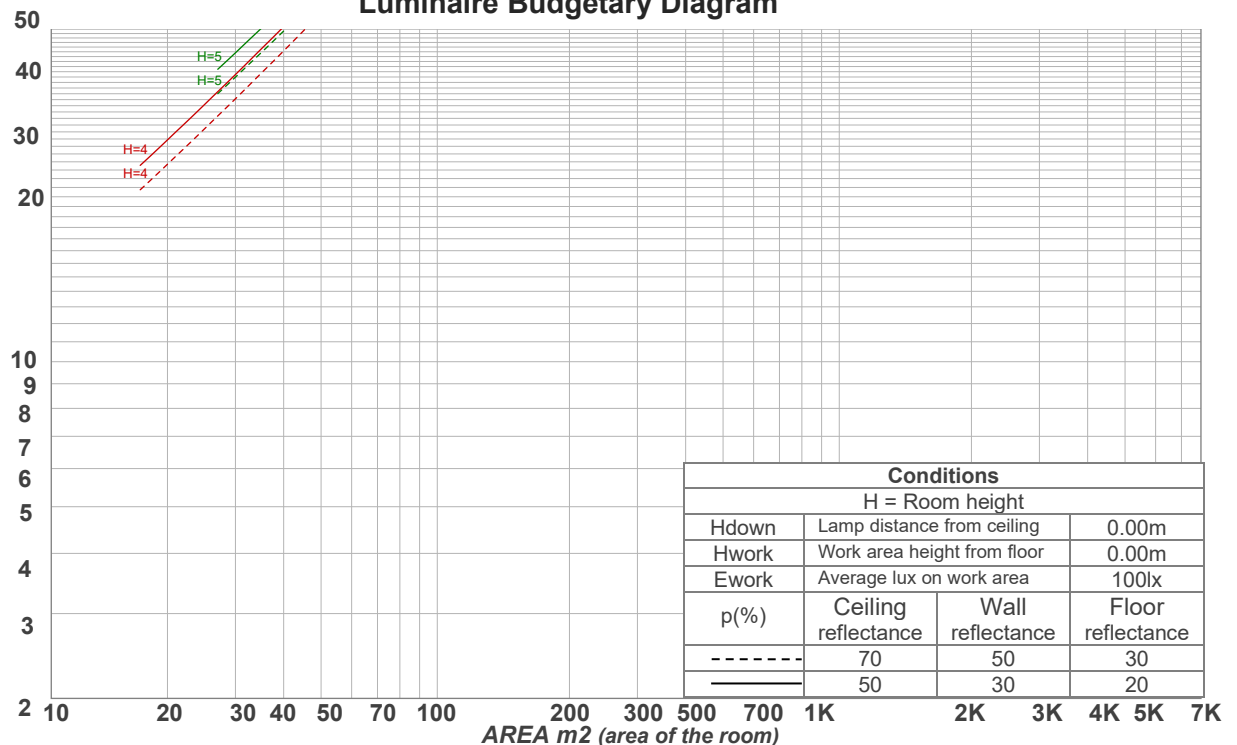
Mounting height: 3.05 meters (10 feet)

## Coefficients of Utilization

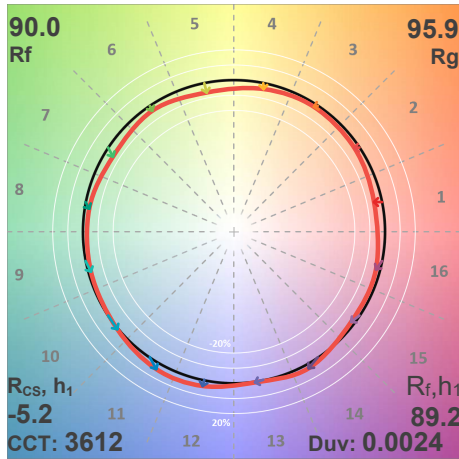
Ceiling reflectance	80				70				50			30			10			0
	70	50	30	10	70	50	30	10	50	30	10	50	30	10	50	30	10	0
Wall reflectance	70	50	30	10	70	50	30	10	50	30	10	50	30	10	50	30	10	0
Floor reflectance	20	20	20	20	20	20	20	20	20	20	20	20	20	20	20	20	20	0
<b>RCR</b>	<b>(RCR: Room Cavity Ratio)</b>																	
	Room Values are expressed as percentage of Lumens delivered to the task surface																	
0	119	119	119	119	116	116	116	116	111	111	111	106	106	106	102	102	102	100
1	113	110	108	106	111	108	106	104	104	102	101	100	99	98	97	96	95	93
2	108	103	99	95	105	101	97	94	98	95	92	95	92	90	92	90	88	86
3	102	96	91	87	100	94	90	86	92	88	85	89	86	83	87	84	82	80
4	97	90	84	80	95	89	83	79	86	82	78	84	81	78	82	79	77	75
5	92	84	78	74	91	83	78	74	81	77	73	80	76	72	78	75	72	70
6	88	79	73	69	87	78	73	69	77	72	68	75	71	68	74	70	67	66
7	84	75	69	65	83	74	68	64	73	68	64	72	67	64	70	66	63	62
8	80	71	65	61	79	70	65	61	69	64	60	68	63	60	67	63	60	58
9	76	67	61	57	75	67	61	57	66	61	57	65	60	57	64	60	57	55
10	73	64	58	54	72	63	58	54	62	57	54	62	57	54	61	57	54	52

## LAMPS (number of lamps)

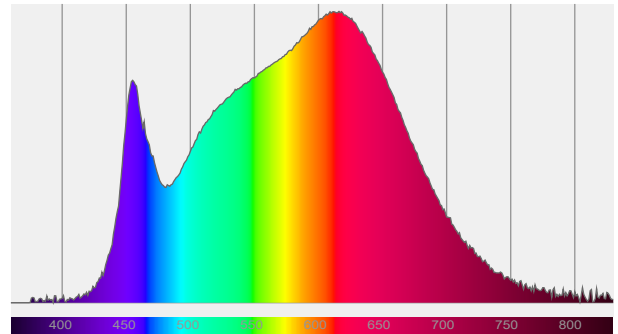
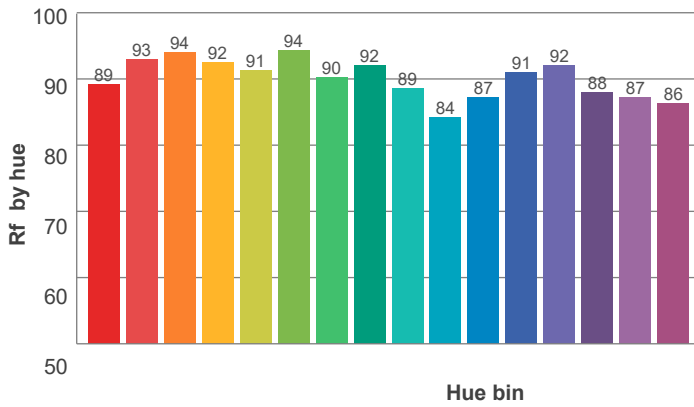
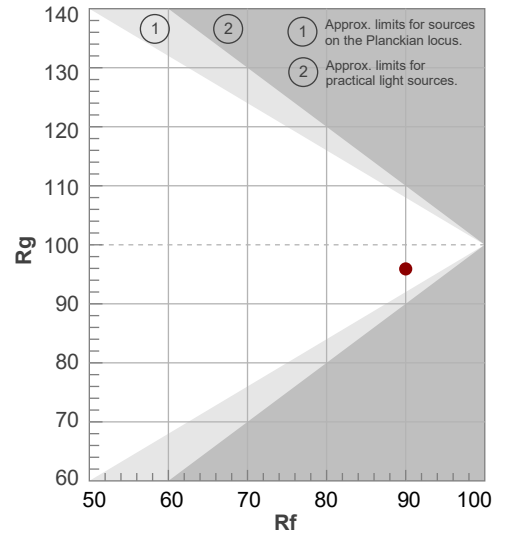
## Luminaire Budgetary Diagram



ANSI/IES TM-30-18 P: 2 / V: - / F: 3

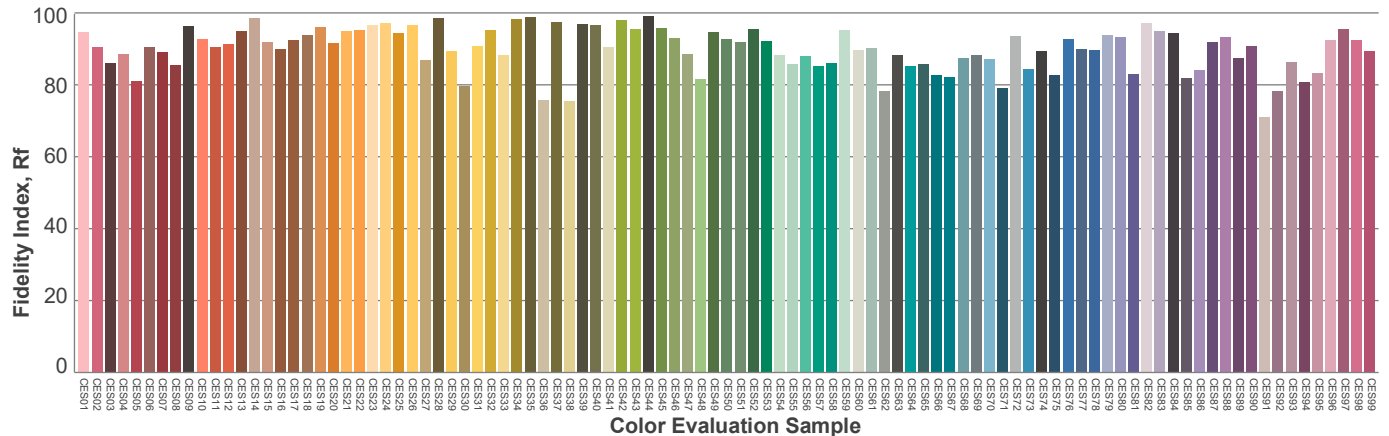
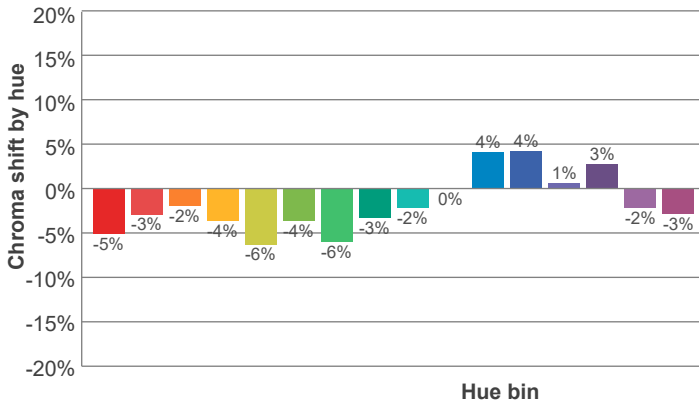


Hue Bin	R <sub>f</sub>	Shifts (%)	
		Chroma	Hue
1	89	-5%	1%
2	93	-3%	1%
3	94	-2%	2%
4	92	-4%	-1%
5	91	-6%	0%
6	94	-4%	0%
7	90	-6%	3%
8	92	-3%	4%
9	89	-2%	8%
10	84	0%	11%
11	87	4%	8%
12	91	4%	0%
13	92	1%	-6%
14	88	3%	-9%
15	87	-2%	-7%
16	86	-3%	-6%



SPD

Red: 32.3%, Power=0.99mW  
 Blue: 12.5%, Power=1.05mW  
 Green: 27.1%, Power=1.55mW  
 UVA: 0.1%, Power=0.00mW  
 Dominant Wavelength: 581nm  
 1<sup>st</sup> Peak Wavelength: 616nm  
 2<sup>nd</sup> Peak Wavelength: 455nm



**Glare Evaluation According to UGR**

Corrected, comprehensive UGR table according to 117-1995, S/H ratio=0.25

p Ceiling		70	70	50	50	30	70	70	50	50	30
p Walls		50	30	50	30	30	50	30	50	30	30
p Floor		20	20	20	20	20	20	20	20	20	20
Room size		Viewing direction at right angles to lamp axis					Viewing direction parallel to lamp axis				
H = mounting height above eye level											
X Y											
2H	2H	22.6	23.3	22.7	23.5	23.7	22.6	23.2	22.7	23.5	23.7
	3H	22.5	23.2	22.9	23.5	23.6	22.4	23.2	22.8	23.4	23.6
	4H	22.5	23.2	22.9	23.4	23.7	22.5	23.2	22.9	23.4	23.7
	6H	22.5	23.1	22.8	23.4	23.8	22.6	23.2	22.9	23.5	23.8
	8H	22.5	23.1	22.8	23.4	23.8	22.6	23.2	22.9	23.5	23.9
	12H	22.4	23.0	22.8	23.4	23.8	22.5	23.1	22.9	23.5	23.9
4H	2H	22.4	23.1	22.8	23.4	23.6	22.3	23.1	22.7	23.3	23.6
	3H	22.5	23.1	22.8	23.4	23.8	22.5	23.1	22.8	23.4	23.8
	4H	22.4	23.0	22.9	23.4	23.9	22.5	23.0	22.9	23.4	23.9
	6H	22.4	23.0	22.9	23.3	23.7	22.5	23.1	23.0	23.4	23.8
	8H	22.4	22.9	22.9	23.3	23.7	22.6	23.1	23.1	23.4	23.8
	12H	22.4	22.8	22.9	23.2	23.7	22.6	23.0	23.1	23.4	23.9
8H	4H	22.4	22.9	22.9	23.2	23.6	22.4	22.9	22.9	23.3	23.6
	6H	22.4	22.8	22.9	23.2	23.8	22.5	22.9	23.0	23.3	23.9
	8H	22.5	22.8	23.0	23.3	23.9	22.7	22.9	23.2	23.5	24.1
	12H	22.5	22.7	23.1	23.2	23.8	22.7	22.9	23.3	23.5	24.1
12H	4H	22.3	22.7	22.8	23.1	23.6	22.3	22.7	22.8	23.2	23.6
	6H	22.5	22.7	23.0	23.3	23.9	22.6	22.8	23.1	23.4	24.0
	8H	22.5	22.7	23.1	23.2	23.8	22.6	22.9	23.2	23.4	24.0
Variation of the observer position for the luminaire distance S											
S = 1.0H		2.9 / -3.7					3.1 / -3.3				
S = 1.5H		5.2 / -4.6					5.3 / -4.0				
S = 2.0H		7.0 / -5.3					7.1 / -4.4				
Corrected glare indices referring to 120 lm total luminous flux											

Due to our continued efforts to improve our products, product specifications are subject to change without notice. Please refer to our website for the latest test results.