

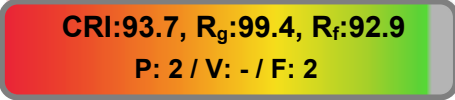
Light efficiency:



Color temperature:



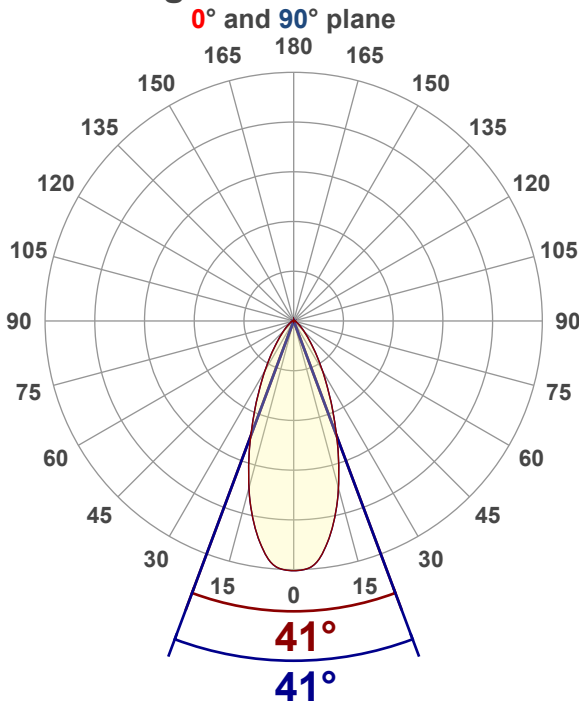
Light quality:



Output: 624 lm
Peak: 992 cd
Power: 7.5 W
Voltage: 24.0 V
Current: 0.312 A
PF: 1.0
THD: 0 %



Angular Distribution



Product name:

AT-CUBE-S-3036-XX

Test Date:

2/25/2026

Beam Angle (50% of the brightness of the centre):
41°

Field Angle (10% of the brightness of the centre):
78.6°

Cut Off Angle (2.5% of the brightness of the centre):
111.5°

Beam Details

*measured at centre of beam

Mounting Height (feet)\(meter)	Lux*	Footcandles*	Beam width (feet) / (meter)
4 ft / 1.2 m	667 lx	62 fc	3 ft / 0.9 m
8 ft / 2.4 m	167 lx	16 fc	6 ft / 1.8 m
12 ft / 3.7 m	74 lx	7 fc	9 ft / 2.7 m
16 ft / 4.9m	42 lx	4 fc	12 ft / 3.6 m
20 ft / 6.1m	27 lx	2 fc	14.9 ft / 4.6 m

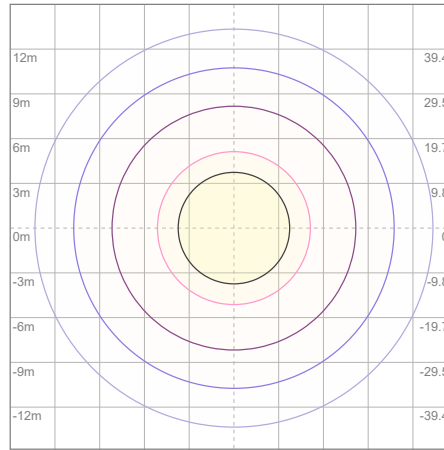
Beam center

Photometric Testing Report

Zonal Lumen Summary

Zone	Lumen	%Luminaire
0-30	442	70.83%
0-40	536	85.90%
0-60	606	97.12%
60-90	17.7	2.84%
70-100	5.81	0.93%
90-120	0.136	0.02%
0-90	623	99.84%
90-180	0.562	0.09%
0-180	624	100.00%

ISO Lux Diagram



Lux at center:	107 lx
3%	3.21 lx
5%	5.35 lx
10%	10.70 lx
30%	32.10 lx
50%	53.50 lx

Conditions:
 Number of planes: 8
 Lux distribution on a surface when lamp is mounted at 3.05 meters from the surface.

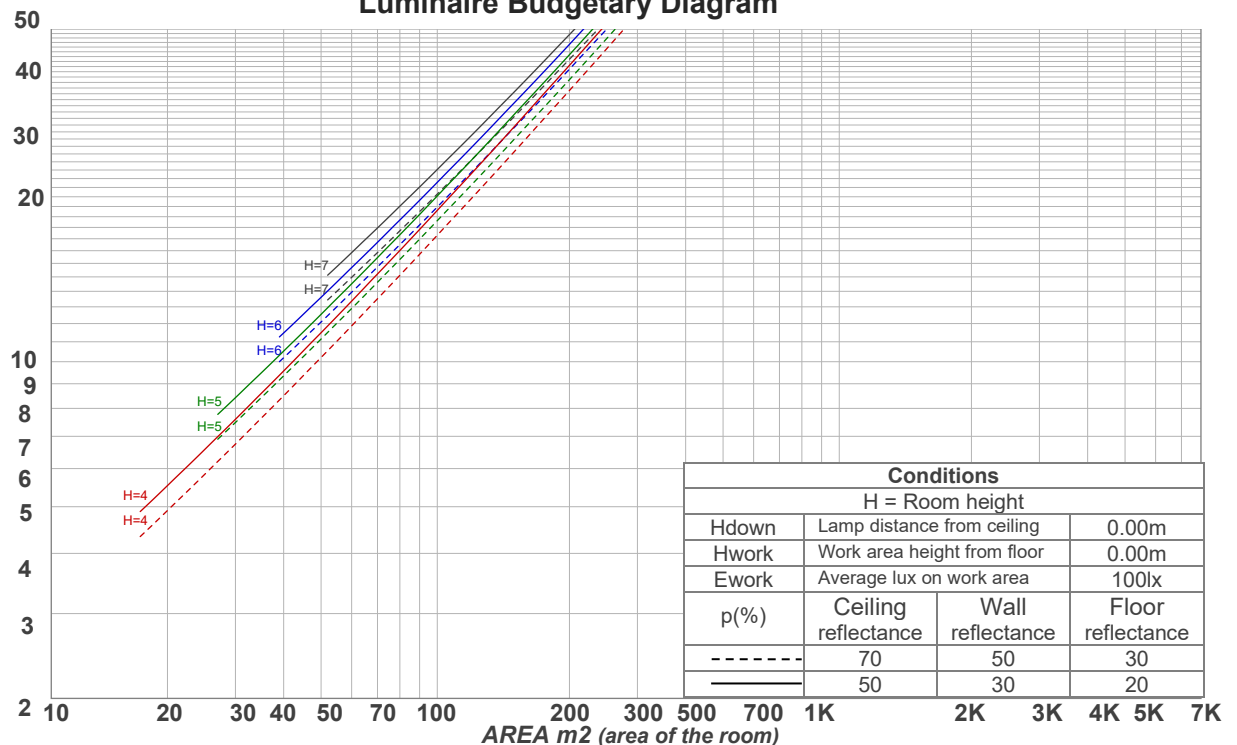
Mounting height: 3.05 meters (10 feet)

Coefficients of Utilization

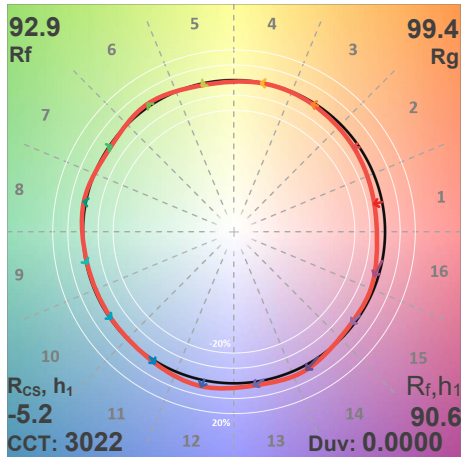
Ceiling reflectance	80				70				50			30			10			0
	70	50	30	10	70	50	30	10	50	30	10	50	30	10	50	30	10	0
Wall reflectance	70	50	30	10	70	50	30	10	50	30	10	50	30	10	50	30	10	0
Floor reflectance	20	20	20	20	20	20	20	20	20	20	20	20	20	20	20	20	20	0
RCR	(RCR: Room Cavity Ratio)																	
	Room Values are expressed as percentage of Lumens delivered to the task surface																	
0	119	119	119	119	116	116	116	116	111	111	111	106	106	106	102	102	102	100
1	113	110	108	105	111	108	106	104	104	102	101	100	99	98	97	96	95	93
2	107	102	98	95	105	101	97	94	97	94	92	94	92	90	92	90	88	86
3	102	95	90	86	100	94	89	85	91	87	84	89	85	83	87	84	81	80
4	97	89	83	79	95	88	83	79	86	81	78	84	80	77	82	79	76	74
5	92	84	78	73	90	83	77	73	81	76	72	79	75	72	78	74	71	69
6	88	79	73	68	86	78	72	68	76	71	68	75	70	67	74	70	67	65
7	83	74	68	64	82	73	68	64	72	67	63	71	66	63	70	66	63	61
8	80	70	64	60	78	70	64	60	68	63	60	67	63	59	66	62	59	58
9	76	67	61	57	75	66	60	57	65	60	56	64	60	56	63	59	56	55
10	73	63	58	54	72	63	57	54	62	57	54	61	57	53	61	56	53	52

LAMPS (number of lamps)

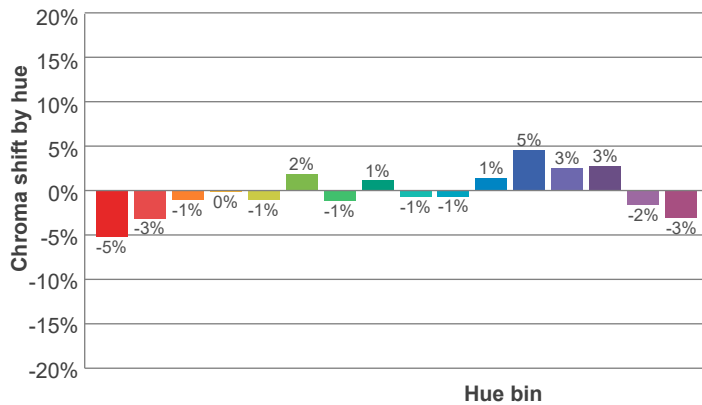
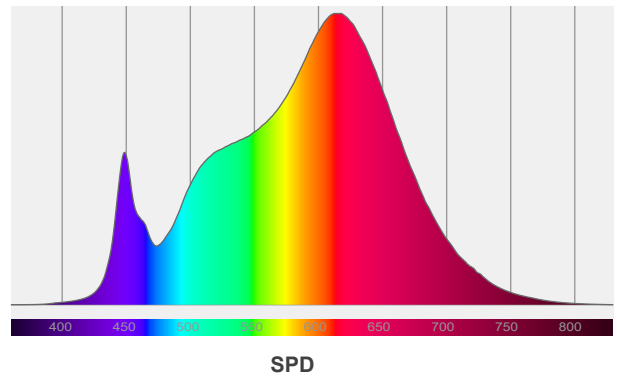
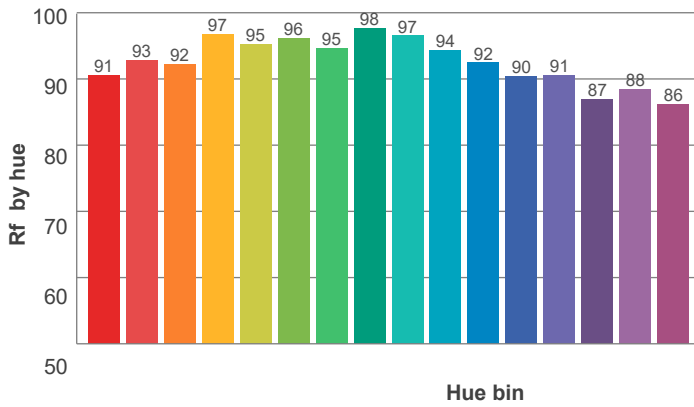
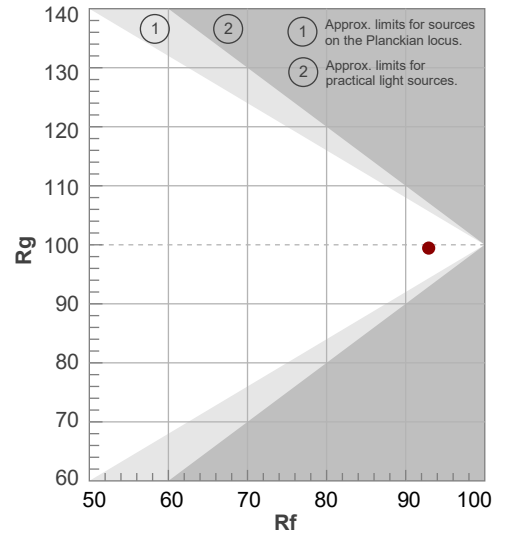
Luminaire Budgetary Diagram



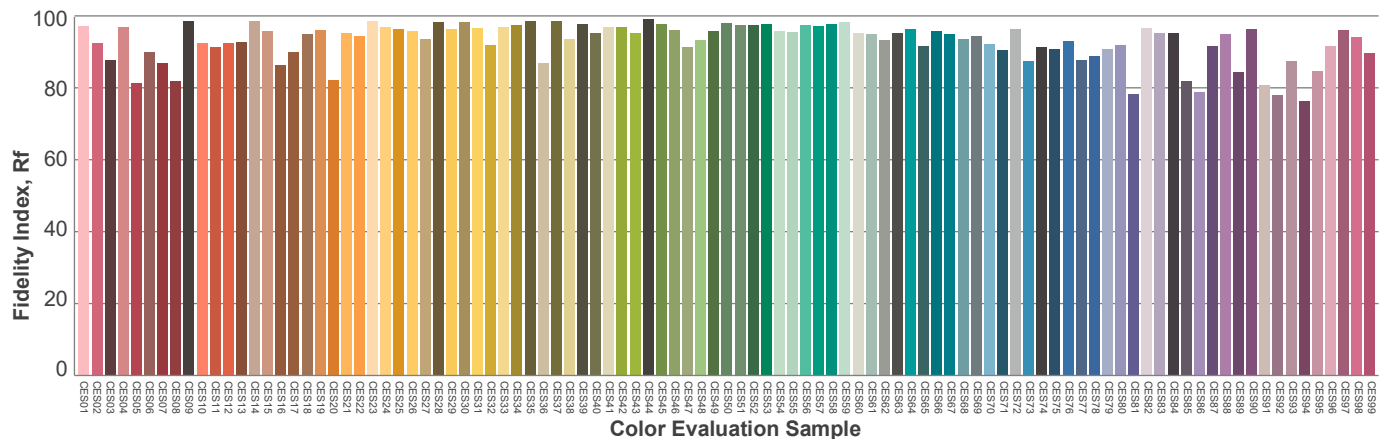
ANSI/IES TM-30-18 P: 2 / V: - / F: 2



Hue Bin	R _f	Shifts (%)	
		Chroma	Hue
1	91	-5%	0%
2	93	-3%	3%
3	92	-1%	4%
4	97	0%	1%
5	95	-1%	2%
6	96	2%	0%
7	95	-1%	-2%
8	98	1%	0%
9	97	-1%	2%
10	94	-1%	3%
11	92	1%	5%
12	90	5%	-1%
13	91	3%	-7%
14	87	3%	-11%
15	88	-2%	-7%
16	86	-3%	-11%



Red: 34.7%, Power=5.0mW
Blue: 8.3%, Power=2.8mW
Green: 25.8%, Power=7.3mW
UVA: 0%, Power=0.0mW
Dominant Wavelength: 583nm
1st Peak Wavelength: 614nm
2nd Peak Wavelength: 448nm



Glare Evaluation According to UGR

Corrected, comprehensive UGR table according to 117-1995, S/H ratio=0.25

p Ceiling	70	70	50	50	30	70	70	50	50	30
p Walls	50	30	50	30	30	50	30	50	30	30
p Floor	20	20	20	20	20	20	20	20	20	20
Room size H = mounting height above eye level X Y	Viewing direction at right angles to lamp axis					Viewing direction parallel to lamp axis				
2H	2H	-0.22	-0.22	-0.15	-0.15	-0.22	-0.22	-0.15	-0.15	-0.22
	3H	-0.22	-0.22	-0.15	-0.15	-0.22	-0.22	-0.15	-0.15	-0.22
	4H	-0.22	-0.22	-0.15	-0.15	-0.22	-0.22	-0.15	-0.15	-0.22
	6H	-0.22	-0.22	-0.15	-0.15	-0.22	-0.22	-0.15	-0.15	-0.22
	8H	-0.22	-0.22	-0.15	-0.15	-0.22	-0.22	-0.15	-0.15	-0.22
	12H	-0.22	-0.22	-0.15	-0.15	-0.22	-0.22	-0.15	-0.15	-0.22
4H	2H	-0.22	-0.22	-0.15	-0.15	-0.22	-0.22	-0.15	-0.15	-0.22
	3H	-0.22	-0.22	-0.15	-0.15	-0.22	-0.22	-0.15	-0.15	-0.22
	4H	-0.22	-0.22	-0.15	-0.15	-0.22	-0.22	-0.15	-0.15	-0.22
	6H	-0.22	-0.22	-0.15	-0.15	-0.22	-0.22	-0.15	-0.15	-0.22
	8H	-0.22	-0.22	-0.15	-0.15	-0.22	-0.22	-0.15	-0.15	-0.22
	12H	-0.22	-0.22	-0.15	-0.15	-0.22	-0.22	-0.15	-0.15	-0.22
8H	4H	-0.22	-0.22	-0.15	-0.15	-0.22	-0.22	-0.15	-0.15	-0.22
	6H	-0.22	-0.22	-0.15	-0.15	-0.22	-0.22	-0.15	-0.15	-0.22
	8H	-0.22	-0.22	-0.15	-0.15	-0.22	-0.22	-0.15	-0.15	-0.22
	12H	-0.22	-0.22	-0.15	-0.15	-0.22	-0.22	-0.15	-0.15	-0.22
12H	4H	-0.22	-0.22	-0.15	-0.15	-0.22	-0.22	-0.15	-0.15	-0.22
	6H	-0.22	-0.22	-0.15	-0.15	-0.22	-0.22	-0.15	-0.15	-0.22
	8H	-0.22	-0.22	-0.15	-0.15	-0.22	-0.22	-0.15	-0.15	-0.22
Variation of the observer position for the luminaire distance S										
S = 1.0H	NaN / NaN					NaN / NaN				
S = 1.5H	NaN / NaN					NaN / NaN				
S = 2.0H	NaN / NaN					NaN / NaN				
Corrected glare indices referring to 624 lm total luminous flux										

Due to our continued efforts to improve our products, product specifications are subject to change without notice. Please refer to our website for the latest test results.