

## ATTRACKT

Low-voltage Track Lighting System  
Track Lighting



Job Information	
Project Name	
Type	
Location	
Quantity	
Date	

### Description

ATTRACKT is an innovative low-voltage track lighting system, designed to be both functional and enjoyable to install. It is specifically crafted for a variety of applications, including recessed, architectural, task and accent in both residential and light commercial spaces. This versatile system offers the options of recessed, suspended, or surface-mounted installation, seamlessly integrating into any space and simplifying the overall installation process. The system is cuttable and exceptionally flexible in the field. It operates as a 2-circuit 4-wire system, providing additional flexibility and superior dimming performance. This allows for the setup of two separately controllable zones. To change the circuit, simply remove, rotate, and re-insert a module. Moreover, the track system allows for effortless adjustment and the repositioning of lights without the need for any tools.

### Features

#### Body

Ultra-discreet aluminum 1" (H) x 1 1/8" (W), 0.05" extrusion track featuring a magnetic contact attachment system. The joints ensure a seamless and continuous run.

#### Electrical

4 Wire / 2-circuit copper conduits provides power supply from compatible 24V DC drivers (2x96W max - drivers sold separately) to multiple ATTRACKT lighting modules and fixtures. Each circuit is rated 4A (2 x 4A = 8A max).

#### Mounting

- Surface
- Suspend

- Trimless Recessed: Precision Pro

#### Compatible Fixtures

The ATTRACKT system is compatible with ATTRACKT lighting modules, including:

- ATTRACKT DASH series
- ATTRACKT SNAP series
- ATTRACKT CHICKLET series
- ATTRACKT DASH WALL WASH series
- ATTRACKT PIPE series
- ATTRACKT CUBE series
- ATTRACKT ECLIPSE series

#### Controls

ATTRACKT is compatible with a wide variety of control options.

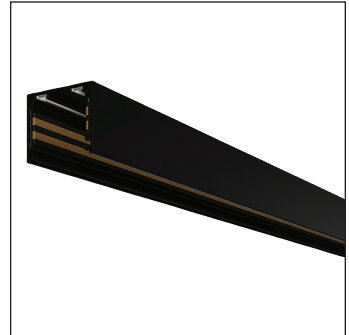
- TRIAC/ELV/0-10V
- Lutron EcoSystem
- Lutron Athena / Vive
- OnCloud
- DALI-2
- DMX

#### Compatible Dimmers

Compatible with Liline OnCloud dimmer. Compatible with most industry standard dimmers (contact factory for compatible dimmers).

#### Included Components

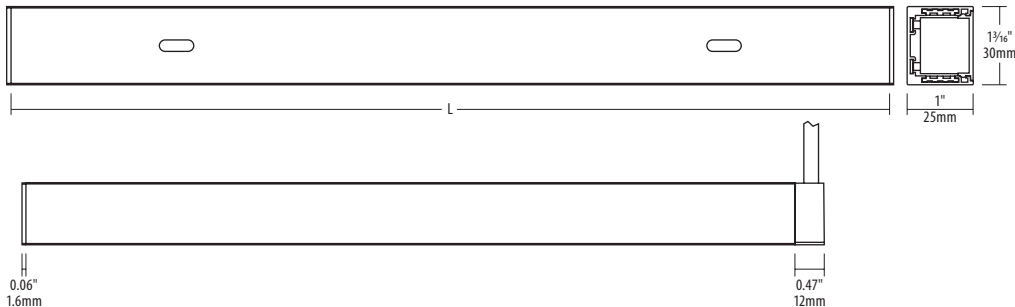
- 2-Circuit track at the selected length
- Track cover
- End caps (2 pcs)



### SPECIFICATION

Approved Location	Dry / Indoor
Application	Surface / Suspended / Trimless
Certification	cETLus
Max. Op. Temp.	40°C (104°F)
Min. Start Temp.	-10°C (14°F)
Primary Voltage	24V DC
Warranty	5 Years

### Technical Drawings



Part No.	Length (Excluding end caps)	Length with end cap and power feed
AT-0402	24" (609.6mm)	24 17/32" (623.2mm)
AT-0404	48" (1219.2mm)	48 17/32" (1232.8mm)
AT-0408	96" (2438.4mm)	96 17/32" (2452mm)

**JA8**  
TITLE 24

### Ordering Guide<sup>1</sup>

Length	Finish Color
AT-04	
02 : 2ft (610mm)	BK : Black
04 : 4ft (1220mm)	WH : White
08 : 8ft (2440mm)	

#### Notes:

<sup>1</sup> Track kit include - track extrusion, 2 end caps and PC cover on the top. Accessories for lighting modules are sold separately. For additional options please consult your A-Line representative. Due to our continued efforts to improve our products, product specifications are subject to change without notice.

## Connectors & Power Feeds

**AT-END-xx**  
Two-circuit end cap, Black (or White).

**AT-FC-xx**  
Two-circuit flexible connector, Black (or White).

**AT-IC-xx**  
Two-circuit 'I' connector, Black (or White).

**AT-LC-xx**  
Two-circuit 'L' connector, Black (or White).

**AT-INNER-LC-xx**  
Two-circuit inner 'L' connector, Black (or White).

**AT-OUTER-LC-xx**  
Two-circuit outer 'L' connector, Black (or White).

**AT-TC-xx**  
Two-circuit 'T' connector, Black (or White).

**AT-XC-xx**  
Two-circuit 'X' connector, Black (or White).

**AT-PF-xx**  
Two-circuit live end power feed, Black (or White).

**AT-PF8-xx**  
Two-circuit live end power feed with 8' cord, Black (or White).

**AT-PF-E-xx**  
Two-circuit live end power feed with end feed, Black (or White).

**AT-PF8-E-xx**  
Two-circuit live end power feed with 8' cord end feed, Black (or White).

## Mounting accessories

**AT-TR-PDW1**  
Drywall channel 914mm / 3', 1/2".

**AT-TR-PDW5**  
Drywall channel 914mm / 3', 5/8".

**AT-OC-PDW1**  
Drywall channel 1'x1', 1/2", outside corner.

**AT-OC-PDW5**  
Drywall channel 1'x1', 5/8", outside corner.

**AT-HC-PDW1**  
Drywall channel 1'x1', 1/2", horizontal corner.

**AT-HC-PDW5**  
Drywall channel 1'x1', 5/8", horizontal corner.

**AT-IC-PDW1**  
Drywall channel 1'x1', 1/2", inside corner.

**AT-IC-PDW5**  
Drywall channel 1'x1', 5/8", inside corner.

**AT-CNPY-KIT-PF-xx**  
Suspension kit, 180° AC, gripper, coupler.

## LED Modules

**AT-LINE5-xxxx-xxxx**  
ATTRACKT DASH, 5W, 2700 K (or 3000 K, 3500 K), 36°, 90 CRI, Black (or White) base, Black (or White) baffle. Opal lens included in the box.

**AT-SPOT8-xxxx-xxxx**  
ATTRACKT SNAP, 8W, 2700 K (or 3000 K, 3500 K), 36°, 90 CRI, Black (or White) base, Black (or White) cap.

**AT-DOT2-xxxx-xxxx**  
ATTRACKT CHICKLET, 2W, 2700 K (or 3000 K, 3500 K), 36°, 90 CRI, Black (or White) base, Black (or White) baffle.

**AT-WALLWASH-xxxx-xx**  
ATTRACKT DASH WALL WASH, 5W, 2700 K (or 3000 K, 3500 K), 36°, 90 CRI, Black (or White) base, Black (or White) baffle.

**AT-CUBE-S-xx36-xxxx**  
ATTRACKT CUBE, 8W, 2700 K (or 3000 K, 3500 K), 36°, 90 CRI, Black (or White).

**AT-PIPE-S-xx36-xxxx**  
ATTRACKT PIPE, 8W, 2700 K (or 3000 K, 3500 K), 36°, 90 CRI, Black (or White).

**AT-ECLIPSE-xx-xx**  
ATTRACKT ECLIPSE, 8W, 2700 K (or 3000 K, 3500 K), 36°, 90 CRI, Black (or White).

## Accessories for LED modules

**AT-LINE5-BAFFLE-xx**  
Baffle for ATTRACKT DASH fixture, Black (or White).

**AT-LINE5-BL**  
Darklight lens for ATTRACKT DASH fixture.

**AT-LINE5-OL**  
Opal lens for ATTRACKT DASH fixture.

**AT-LINE5-HC-xx**  
Honeycomb for ATTRACKT DASH fixture, Black (or White).

**AT-SPOT-CAP-xx**  
Cap for ATTRACKT SNAP fixture, Black (or White).

**AT-SPOT-SNO-BKBK**  
**AT-SPOT-SNO-BKGD**  
**AT-SPOT-SNO-WHBK**  
**AT-SPOT-SNO-WHGD**  
Oval snoot for ATTRACKT SNAP fixture, Black (or White) / Gold (or black).

**AT-SPOT-SN-BKBK**  
**AT-SPOT-SN-BKGD**  
**AT-SPOT-SN-WHBK**  
**AT-SPOT-SN-WHGD**  
1" snoot for ATTRACKT SNAP fixture, Black (or White) / Gold (or black).

**AT-SPOT-HC**  
Honeycomb for ATTRACKT SNAP fixture.

**AT-SPOT-SL-LENS**  
Soft lens for ATTRACKT SNAP fixture.

**AT-SPOT-LINEAR-LENS**  
Linear lens for ATTRACKT SNAP fixture.

## Control

### OnCloud



#### AT-OCPF1C-xx

24V, 1-Channel power feed with OnCloud adapter, controls wireless dimming and on/off capability through WIZ app, Room Controller and smart speakers, Black (or White).  
NOTE: Compatible only with non-dimming drivers.



#### LC-CRTL-SCENE-1

OnCloud Room Controller, Wi-Fi, ON/OFF, CCT, Dimming and favourite scenes.  
NOTE: To be used with AT-OCPF1C-xx.

## Dimming

### TRIAC/ELV/0-10V



#### HWB-DIM-CDC-24V-30W

30W dimmable Class 2 power supply, 24V.



#### HWB-DIM-CDC-24V-60W

60W dimmable Class 2 power supply, 24V.



#### HWB-DIM-CDC-24V-96W

96W dimmable Class 2 power supply, 24V.

### Powered by Lutron®



#### LED-HWB-D1-24V-100W

96W, 120-277V DALI Controlled power supply, Class 2.



#### HWB-CDC-96W-AWN

96W, 120-277V Lutron Athena Controlled power supply, Class 2.



#### HWB-CDC-96W-VIVE

96, 120-277V Lutron Vive Controlled power supply, Class 2.



#### LED-HWB-DIM3-24-40

40W, 120-277V Lutron Hi-Lume 1% 3-wire/EcoSystem power supply, Class 2.

## Non-Dimming

### Plug-in Drivers



#### LED-DVR-24V-24W

24W plug-in LED Driver with DC 2.1 Jack, 24V.



#### LED-DVR-24V-36W

36W plug-in LED Driver with DC 2.1 Jack, 24V.



#### LED-DVR-24V-60W

60W plug-in LED Driver with DC 2.1 Jack, 24V.



#### LED-DVR-24V-90W

90W plug-in LED Driver with DC 2.1 Jack, 24V.



#### LED-HWB-DC21-6-PF

DC 2.1 to bare leads power feed.  
\* Power feed required for all drivers with DC 2.1 jack.

### Hardwire Drivers



#### LED-HWB-24V-24W

24W Hardwire box LED Driver with DC 2.1 Jack, 24V.



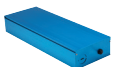
#### LED-HWB-24V-36W

36W Hardwire box LED Driver with DC 2.1 Jack, 24V.



#### LED-HWB-24V-60W

60W Hardwire box LED Driver with DC 2.1 Jack, 24V.



#### LED-HWB-24V-100W

96W Class 2 power supply, 120 / 277VAC, 24VDC.



#### LED-HWB-DC21-6-PF

DC 2.1 to bare leads power feed.  
\* Power feed required for all drivers with DC 2.1 jack.