

## KLICK

KLICK Lightbar, 80-4000 Lumens  
Track Lighting



Job Information	
Project Name	
Type	
Location	
Quantity	
Date	

### Description

The KLICK Lightbar is a compact linear LED lights. It offers broad light distribution with a discreet look. The opal inserts make an impact with their streamlined design and generate base lighting that illuminates objects and rooms especially evenly.

### Features

#### Body

Constructed from aluminum, this LED fixture features a slim linear profile. A translucent polycarbonate lens provides diffuse lighting. Available in up to 8-ft, in 4-inch increments.

#### LED Characteristics

Offered with optional high-powered LEDs and a selection of CRI options. Maintains uniform intensity with a typical luminous flux up to 500 lumens per foot, with up to 95 CRI.

#### Beam Spread

The fixture features a 110° beam spread.

#### Mounting

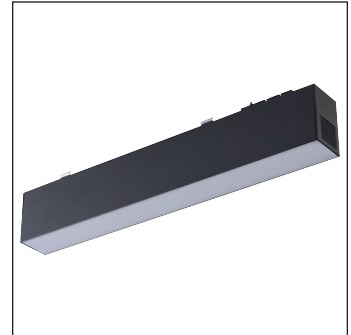
This LED fixture is designed to be simple and convenient, with secure-click locking technology; providing significant savings on installation and maintenance.

#### Dimming

The track fixture is dimmable when used with compatible dimmable driver (Consult factory for compatible drivers and dimmers).

#### Compatibility

Compatible with KLICK track series.



### SPECIFICATION

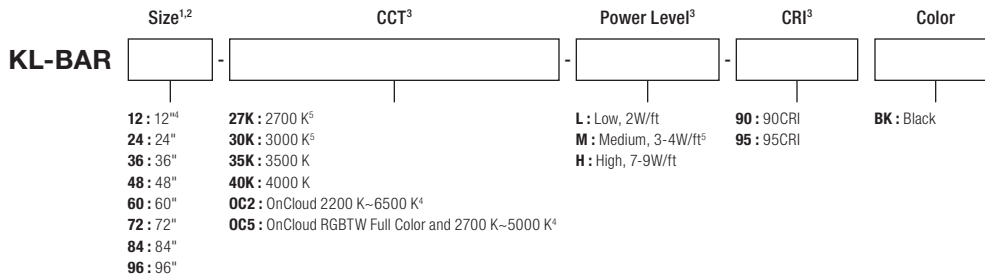
Approved Location	Dry / Indoor
Application	Track
Certification	cETLus
Beam Spread	110°
Color Temperature	As per ordering guide
CRI	As per ordering guide
Dimmable	Yes
Lumens per Watt	Up to 76
Voltage	24V DC
Wattage	Up to 9W/ft

### Technical Drawings



Model	Length (L) <sup>1,2</sup>	Lumen Output: <sup>3</sup>					
		30K, M, 90CRI	30K, H, 90CRI	OC2 <sup>4</sup> , M, 95CRI	OC5 <sup>4</sup> , L, 95CRI	OC5 <sup>4</sup> , M, 95CRI	OC5 <sup>4</sup> , H, 95CRI
		4W/ft	9W/ft	3W/ft	2W/ft	3W/ft	7W/ft
KL-BAR12	12" <sup>4</sup>	300	500	250	80	150	250
KL-BAR24	24"	600	1000	500	160	300	500
KL-BAR36	36"	900	1500	750	240	450	750
KL-BAR48	48"	1200	2000	1000	320	600	1000
KL-BAR60	60"	1500	2500	1250	400	750	1250
KL-BAR72	72"	1800	3000	1500	480	900	1500
KL-BAR84	84"	2100	3500	1750	560	1050	1750
KL-BAR96	96"	2400	4000	2000	640	1200	2000

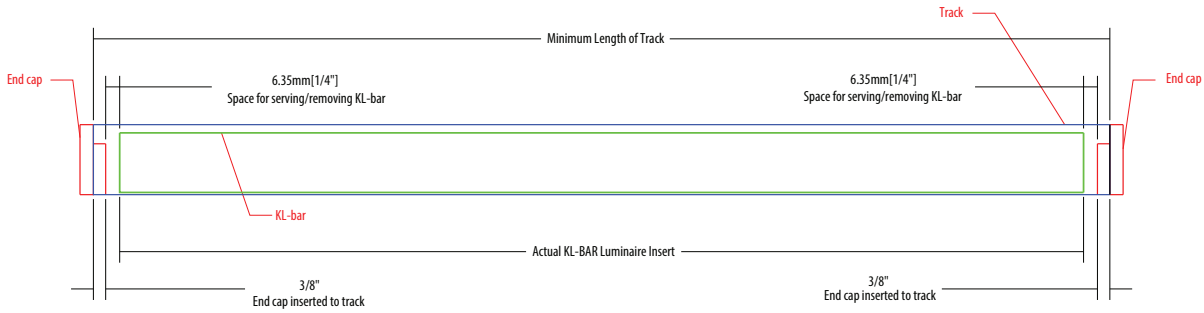
### Ordering Guide



#### Notes:

<sup>1</sup> The nominal fixture length is different than the extrusion length, see page 2. <sup>2</sup> If installing the KL-BAR in Quick Klick system extrusion, contact an A-line representative for access to drawings to determine the length. Servicing/removing spaces are necessary due to different nominal sizes. <sup>3</sup> For available configurations, please see Lumen Output Table. <sup>4</sup> OnCloud is not available for 12" <sup>5</sup>Medium(M) power level in combination with CCTs 2700 K(27K), 3000 K(30K) available with 80CRI only.

## Track/luminaire dimensions<sup>1</sup>



27K/30K, M, 80CRI <sup>4</sup>			
Luminaire insert model	KL-BAR Luminaire insert Length	Actual KL-BAR Luminaire insert Length (inches)	Minimum length of Track (inches)
KL-BAR12	12	9.344	10.594
KL-BAR24	24	21.450	22.700
KL-BAR36	36	33.556	34.806
KL-BAR48	48	45.663	46.913
KL-BAR60	60	57.769	59.019
KL-BAR72	72	69.875	71.125
KL-BAR84	84	81.982	83.232
KL-BAR96	96	90.085	91.335

27/30/35/40K, H, 90CRI; OC2(TW), M, 95CRI			
Luminaire insert model	KL-BAR Luminaire insert Length	Actual KL-BAR Luminaire insert Length (inches)	Minimum length of Track (inches)
KL-BAR12	12	10.984	12.234
KL-BAR24	24	22.795	24.045
KL-BAR36	36	34.606	35.856
KL-BAR48	48	46.417	47.667
KL-BAR60	60	58.228	59.478
KL-BAR72	72	70.039	71.289
KL-BAR84	84	81.850	83.100
KL-BAR96	96	93.661	94.911

27/30/35/40K, M, 90CRI; OC5(RGBTW), L/M/H, 95CRI			
Luminaire insert model	KL-BAR Luminaire insert Length	Actual KL-BAR Luminaire insert Length (inches)	Minimum length of Track (inches)
KL-BAR12	12	9.016	10.266
KL-BAR24	24	20.827	22.077
KL-BAR36	36	32.638	33.888
KL-BAR48	48	44.449	45.699
KL-BAR60	60	56.260	57.510
KL-BAR72	72	68.071	69.321
KL-BAR84	84	79.882	81.132
KL-BAR96	96	91.693	92.943